

Up close to the faraway
aboard Le Commandant-Charcot

Inaugural seasons 2021 - 2022 | Geographic North Pole & Arctic • Antarctic







Up close to the faraway

Forget everything you know about the Arctic and the Antarctic

Because there is so much more to them. Beyond the polar circles, at over 66° latitude... The hypnotic blue palette of a glacier. The fur-clad silhouette emerging from the blizzard, carried along by dogs led with a deft hand. The jolt provoked by the approach of a curious polar bear. The huge thrill as we stand upon the geographic North Pole. The excitement of being surrounded by thousands of emperor penguins. A heart that beats in the face of these raw lands, walked on less than the Moon, reached only by rare explorers.

Le Commandant-Charcot is the culmination of all these dreams of the absolute.

For the first time, you will reach the ultimate level of adventure. You will explore the most isolated Arctic and Antarctic regions of the planet, with brand-new itineraries.

For the first time, we will tame these white paradises together thanks to activities that have never been proposed before during our expedition cruises. Dog sled, a flight in a tethered hot air balloon, a dive in polar waters... Never before will the outings have been so immersive or enabled an approach of these expanses from such an unexpected perspective.

You will be the privileged few setting sail aboard a new kind of luxury cruise ship, one that is shaped for polar exploration. With its cutting-edge technology, in harmony with our desire to work towards sustainable tourism, *Le Commandant-Charcot* is revolutionising the cruise world.

An experience whose magic transforms man, in complete harmony with the Earth... Up close to the faraway.

“From where does this strange, powerful and enduring attraction to the polar regions come, such that after returning one forgets the mental and physical fatigue resulting from the expedition and dreams only of returning? From where do these deserted, terrifying lands attain their extraordinary charm? Is it the pleasure of the unknown? The thrill of the struggle and the effort required to reach them and to survive in them? The arrogance of attempting to do something that others do not? The joy of being far away from small-mindedness and meanness? All of these play their role, as does something more. I now consider that these regions leave a kind of reverent mark on a person. Any man who reaches this place feels his spirit soar.”

Jean-Baptiste Charcot, the gentleman of the poles





Jean-Baptiste Charcot, the gentleman of the poles

A doctor, explorer and exceptional sailor, Jean-Baptiste Charcot (1867-1936) launched the era of great French polar explorations. As early as 1902, he had already crossed the Arctic Circle and embarked on a long series of explorations that would take him from Greenland to Antarctica. Aboard his ship, the *Pourquoi-Pas?*, Captain Charcot would expand our knowledge of the mysterious world of ice. Topographic studies, cartography, surveys of the seabed, oceanographic readings, studies of magnetism, collections of zoological and botanical samples: the learnings from these scientific expeditions is vast. But this skilled sportsman, a rugby player and Olympic medal winner in sailing, was also a humanist, passionate about multi-cultural encounters with people of the icy North.



By naming the latest jewel in its fleet after him, PONANT wanted to pay tribute to Jean-Baptiste Charcot, an emblematic figure of the first French polar expeditions.

Calendar

Antarctic

DEPARTURE	ITINERARY		NIGHTS	PAGE
1st November 2021	PUERTO MONTT • USHUAIA	The Emperor Penguins of Bellingshausen Sea	18	35
19th November 2021	USHUAIA • USHUAIA	Expedition to Charcot & Peter I Islands	14	37
3rd December 2021	USHUAIA • USHUAIA	The Weddell Sea & Larsen Ice Shelf	11	36
14th December 2021	USHUAIA • USHUAIA	Expedition to Charcot & Peter I Islands	CHRISTMAS CRUISE	14 37
28th December 2021	USHUAIA • USHUAIA	The Weddell Sea & Larsen Ice Shelf	NEWYEAR CRUISE	11 36
8th January 2022	USHUAIA • USHUAIA	Expedition to Charcot & Peter I Islands		14 37
22nd January 2022	USHUAIA • USHUAIA	The Weddell Sea & Larsen Ice Shelf		11 36
2nd February 2022	USHUAIA • USHUAIA	Expedition to Charcot & Peter I Islands		14 37
16th February 2022	USHUAIA • USHUAIA	The Ross Sea		24 38
14th March 2022	USHUAIA • USHUAIA	The Weddell Sea & Larsen Ice Shelf		11 36
25th March 2022	USHUAIA • USHUAIA	The Weddell Sea & Larsen Ice Shelf		11 36
5th April 2022	USHUAIA • MONTEVIDEO	The Weddell Sea & the South Sandwich Islands		17 39

Arctic

DEPARTURE	ITINERARY		NIGHTS	PAGE
31st May 2021	LE HAVRE • REYKJAVIK	In the Wake of Captain Jean-Baptiste Charcot		14 46
14th June 2021	REYKJAVIK • REYKJAVIK	At the Genesis of the French Polar Expeditions		10 47
24th June 2021	REYKJAVIK • REYKJAVIK	Discovering the Northeast Greenland National Park		12 48
24th July 2021	LONGYEARBYEN • REYKJAVIK	The Geographic North Pole		15 45
8th August 2021	REYKJAVIK • LONGYEARBYEN	The Geographic North Pole		15 45
23rd August 2021	LONGYEARBYEN • REYKJAVIK	The Geographic North Pole		15 45
7th September 2021	REYKJAVIK • NOME	The Northwest Passage		24 49

The ultimate exploration

Brand-new itineraries, inaccessible up until now

PONANT polar cruises are taking a new direction with *Le Commandant-Charcot*, the first PC2-class luxury polar cruise ship capable of sailing into the very heart of the ice. Thanks to this remarkable new ship, mythical destinations like the Geographic North Pole or the Ross Sea are now available to PONANT guests.

Explore Western and Eastern Antarctica

Only broached since 1820, this icy expanse has spectacular mountainous landscapes, the most imposing icebergs that exist, vast colonies that sometimes bring together several thousand penguins, and exceptional marine wildlife: fur seals, albatrosses, elephant seals, orcas and whales... The ultimate sanctuary for wildlife, this fascinating world of force and beauty will reveal itself to you in all of its splendour.

Discover the Arctic as never before

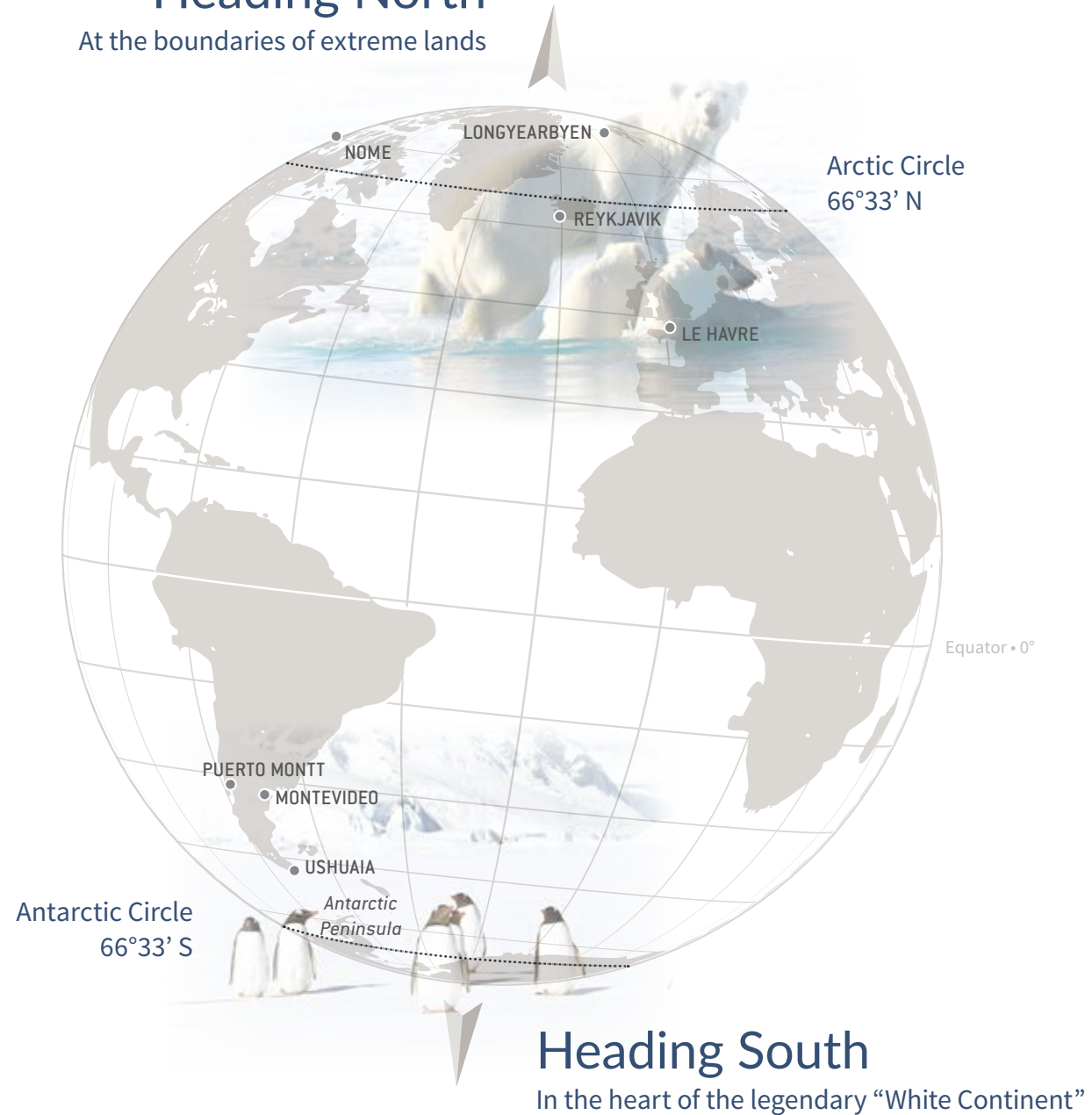
The landscapes of the Arctic are places whose primeval beauty evokes feelings of a rare intensity. With each port of call, observe exceptional wildlife in its natural habitat, lounging on the ice floe or playing in the wake of your ship, and set off to meet the Inuit people, following the rhythm of the seasons as they preserve an age-old culture and way of life. In this magnificent setting, time seems to stretch on as a magical spell is cast...





Heading North

At the boundaries of extreme lands



Heading South

In the heart of the legendary "White Continent"

PONANT, polar specialist

The world leader in polar cruises to the Arctic and Antarctica, PONANT has been taking its guests to the most remote regions of the planet for more than 20 years. Today, we are offering you a chance to discover virtually unexplored regions and enjoy a fascinating experience aboard the first cruise ship capable of reaching the most extreme northerly and southerly latitudes: *Le Commandant-Charcot*.

Recognised experience, a tradition of excellence

Captains, officers and crew, trained in sailing in icy conditions, have accumulated precious experience and expertise to meet the challenge of sailing to the North Pole and the most inaccessible coastlines of the Antarctic continent. The latest generation technological equipment of *Le Commandant-Charcot* will allow us to respect the very strict security and environment rules governing sailing in a polar environment.

The commitment and the flexibility of the entire crew will ensure that you fulfil your dream of polar adventures.





Respect for the environment at the heart of PONANT's development

PONANT was created by mariners keen to share their passion for the sea.

For more than thirty years, we have taken our guests to the most remote parts of the planet, where nature reigns supreme. This choice brings with it responsibilities towards the environment and the indigenous people we meet.

With its daring design, Le Commandant Charcot offers an all new cruise experience in the far reaches of the Arctic and Antarctic regions and opens a new chapter in the history of sailing. Propelled by electricity and engines running on Liquefied Natural Gas (LNG), this vessel is fitted with the latest environmental protection technology, thus limiting its fine particle emissions. This major innovation is a mark of PONANT's commitment to sustainable and responsible tourism.



A veritable polar odyssey

Le Commandant-Charcot is beginning a new type of exploration at the extreme latitudes, blending initiation, humility and emotion.

The expertise of the naturalist guides and scientists aboard

A team of 16 polar specialists are aboard to lead each exploration. Depending on the destinations, marine biologists, ornithologists, glaciologists, geologists, and experts in the history of the great polar expeditions will rub shoulders with the scientists aboard, and prepare and accompany each outing. During fascinating conferences, they share with our guests their expertise, knowledge and, above all, their wonder for this fragile and pure polar world, so that each one becomes an ambassador for these remote regions.

Brand-new activities for an authentic immersion in the heart of polar life

In addition to the outings and shore visits in Zodiac® dinghies that have forged the reputation of our expedition cruises, make the most of unique and unusual activities aboard *Le Commandant-Charcot*. Included or optional, and with a limited number of places, they will help you discover the polar expanses from a brand-new perspective, making every moment a new adventure.

We are privileged guests in these extreme lands where we are at the mercy of weather and ice conditions. Landings on certain sites and the observation of certain wildlife cannot be guaranteed. They vary from day to day, making each PONANT cruise a unique experience. The Captain and the Expedition Leader will make every effort to ensure that your experience is as rich as possible, while complying with the safety rules and instructions imposed by IAATO and AECO.





Participative science

Included Arctic / Antarctic

Le Commandant-Charcot is fitted with the most modern oceanographic equipment and all the facilities necessary to accompany a scientific team in its research. Guided by our naturalists and the team of scientists, you will thus have the opportunity to make a direct contribution to the global scientific effort. Helping scientists to set up a station on the ice floe, deploying an Argos marker buoy or taking water samples: thanks to simple protocols, you'll be able to discover part of the scientific adventure in the polar regions and contribute to improving the knowledge of biodiversity, marine mammals or glaciology and better understand Climate/Ecosystem/Man interactions.



Outings and shore visits in Zodiac® inflatables

Included Arctic / Antarctic

Aboard *Le Commandant-Charcot*, a fleet of 16 Zodiac® expedition dinghies will be used for outings and shore visits throughout the cruise. Getting closer to a glacier calving huge icebergs, setting foot on a sheet of ice floe, observing bears, seals, sea lions and penguins up close: so many unforgettable moments that very few people will ever have the chance of experiencing in these regions that are hostile to man and home to unique wildlife.



Hot air balloon

Included, with limited places available Arctic / Antarctic

Thrill-seekers and fans of exceptional, romantic landscapes, lulled by suspended moments... A flight in a tethered hot air balloon, handled by professionals, will let you take to the skies to admire the infinite crystal-clear panoramas of the Arctic and the Antarctic from above. You will always remember, and with emotion, these summits touching the skies, this immaculate ice floe and these steep hillsides and serrated contours stretching out to the horizon. This will also be an opportunity to observe the ship at work in the vastness of its environment.



Kayaking

Included, with limited places available Arctic / Antarctic

Glide on the clear waters or between the ice floes and get as close as possible to the immaculate nature of the poles. Supervised by licenced expert guides, you will try your hand in a kayak, a boat that has been favoured by the Inuits for at least 4,000 years. The kayak was initially used for hunting and fishing; for you, it will be a means of making the very most of your adventure on the White Continent or in the Far North.

Dog sled

Included Arctic

Try out a practice that dates back to 6,000 years before our era. Faithful companions to the Inuit who made their use widespread in around 1000 AD, sled dogs have also accompanied trappers in the American Far North and explorers on their most extraordinary expeditions. Led with a deft hand by their master and your local guide, they will take you across enchanting decors during a magical ride. This is the ideal way to discover the ice sheet; you will hear only the noise of the sled's runners sliding across the ice, the paws of the dogs in the snow and the orders given by the Inuit. Let yourself be lulled by the magic of the moment.

Ice fishing

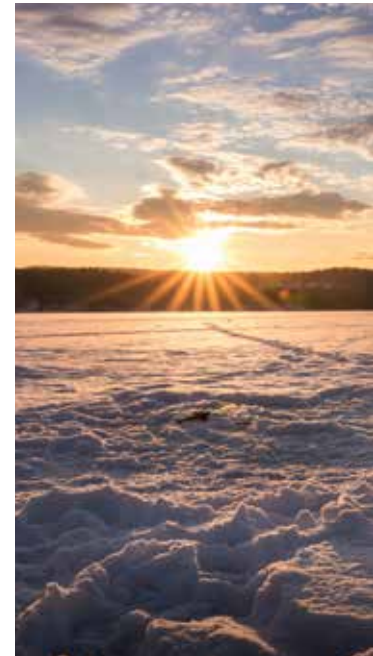
Included Arctic

What better place than the icy Arctic regions to practice ice fishing? Assisted by the naturalist guides, you will look for the perfect spot to cut your hole on the ice floe or on frozen lakes and try to catch fish using an ancestral method. This activity off the beaten path will equally delight fans of sports fishing and those who are curious for new discoveries.

Hovercraft

Included Arctic / Antarctic

Following the example of *Le Commandant-Charcot*, designed to sail to the edge of the poles, hovercraft, which work as well on land as they do on sea, will take you to the most hard-to-reach places. Their unique propulsion system will ensure that you can explore the ice floe in total safety, regardless of ice and weather conditions. They will drop you in the heart of the austral or boreal vastness, in the deafening silence specific to this extreme environment, and let you live out a dream of absolute escape.





Polar diving

Optional Arctic / Antarctic

Diving in polar waters means an exceptional chance to admire an unusual landscape and to meet marine animals in their natural environment. Whether along an iceberg, meeting a magical world with a thousand and one shades of blue, or along a drop-off in search of anemone, soft coral, giant isopods... Diving will provide you with the unique opportunity to penetrate a unique and little-known world.



Hiking

Included Arctic / Antarctic

During each shore landing, depending on the ecological resilience of the biome encountered, we will propose hikes at different levels, in the company of your experienced naturalist guides: from a simple stroll along the coast to walks lasting several hours to reach particular viewpoints or historical sites. When the itineraries allow it, you'll put on snowshoes to set off, like the explorers of old, to discover areas that have barely known Man. In the Arctic, some excursions will be organised with sled dogs, the faithful companions of the Inuit. Trained to detect areas of thin ice and warn of the presence of bears, they will guide you and ensure your safety.



Snowmobiles

Included Arctic / Antarctic

Using comfortable, ultra-modern, electric snowmobiles, which are silent and meet the most stringent standards, you can access firm land from the ship in order to constantly discover new panoramas. This light and secure activity, accessible to all, will enable you to travel around safely, explore the polar expanses and become intoxicated by these grandiose landscapes, in the company of professional guides.





Le Commandant-Charcot

Welcome on board

Experience the intensity of a polar exploration voyage in a real setting of exception, blending elegant raw materials, refined details and sleek lines.

Exceptional design, comfort and refinement

Designers with an international reputation

For the design and decoration of *Le Commandant-Charcot*, PONANT commissioned two internationally renowned architecture agencies, the studio of **Jean-Philippe Nuel** and **Wilmotte & Associés**.

The atmosphere of the ship is designed to be in harmony with the environment. The approach is contemporary creates a warm and elegant setting. Particular care is taken with the details and the choice of materials: stone, wood and leather. Lines are fluid, in coherence with a maritime signature and in perfect harmony with the light palette.

The art of French-style living

Whatever your desires, our professional and attentive staff are at your disposal to make your cruise an exceptional experience. In the high Arctic, or in the most remote Antarctic seas, you will find the refined facilities and discreet service that have forged PONANT's signature over the last thirty years. This French Touch blends discretion with refined services. PONANT works with partners who share our constant pursuit of excellence. These prestigious brands are ambassadors for French luxury all over the world:

- **Gastronomy:** Ladurée macarons for afternoon tea, Lenôtre sweet pastries and bread, Bordier traditional butter, a selection of fine wines from Maison Taillevent, Veuve Clicquot champagne at gala dinners, fragrant aromas of the Palais des Thés, Évian mineral water...
- **Way of life:** Fragonard mood fragrances, Hermès bath products in all Staterooms and Suites, fitness room, Snow-Room...





Panoramic views over the ice floe

From the *Blue Lagoon* on Deck 9, access the ultimate privilege of an exceptional view over the ice floe. Comfortably ensconced around the giant brazier or in the heated outdoor pool, you'll be able to appreciate each detail of this spectacular ice landscape.



- 1 - The giant brazier allowing you to enjoy the outdoors in total comfort.
- 2 - The *Blue Lagoon*: an outdoor pool heated at 27 °C to 37 °C thanks to an energy recovery system.



Luxury, harmony and serenity at the heart of the polar world

Noble materials, warm tones, meticulous aesthetics, a relaxing atmosphere bathed in soft light... The Observatory Lounge and the Grand Salon will offer you the perfect setting to peacefully admire the ice surrounding the ship.



1 & 2 - The Panoramic Lounge at the front of deck 9.



Superb haute cuisine

In one of *Le Commandant-Charcot's* two restaurants, come and taste the delights of a refined table and savour exceptional dishes, prepared by a brigade of talented chefs, driven by their passion for French culinary heritage.



- 1 - The Captain's table; in the background, our cellar of fine wines.
- 2 - The panoramic gastronomic restaurant.
- 3 - the Main Lounge.



Relaxation and well-being before the icy expanse

In a setting with a soothing atmosphere, alternate relaxation sessions in the well-being space with the sauna or the Snow-Room.



- 1 - The Health and Well-Being space.
- 2 - The Snow-Room: try this fun and invigorating snow bath as you come out of the sauna.
- 3 - A beauty treatment cabin, always with a large opening onto the icy world outside.

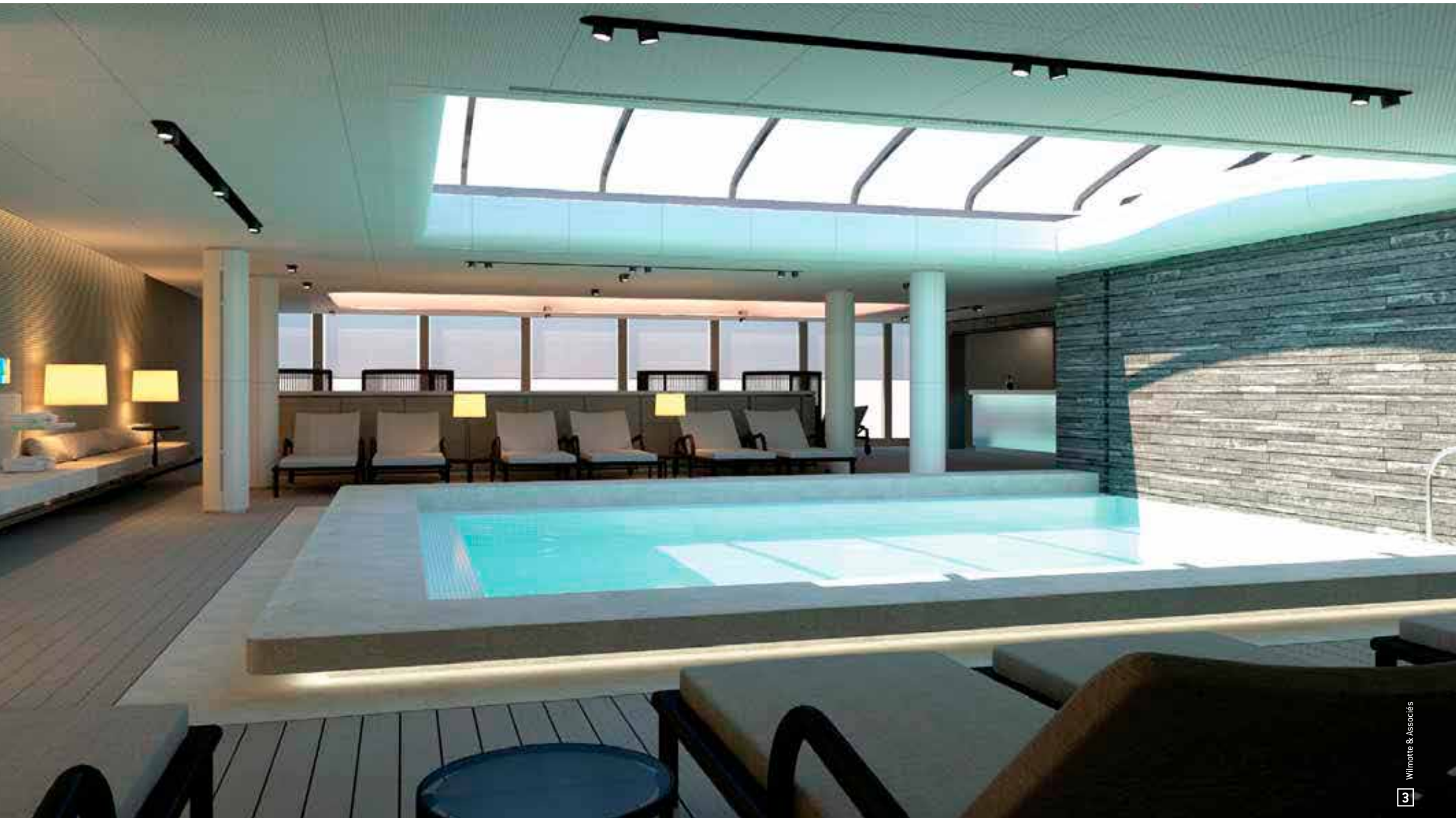


Fitness Room

Relax in the indoor pool extended from its winter garden and bathed in natural light or exercise in the fitness room equipped with the latest-generation high-end machines.



- 1 - The gym.
- 2 - The winter garden.
- 3 - The indoor pool on deck 9 and its huge glass roof.



The staterooms and suites of *Le Commandant-Charcot*

The luxurious Owner's Suite, some 115 sq.m (1237 sq.ft) with an immense private terrace and jacuzzi, the four remarkable Duplex Suites with jacuzzi, the Privilege Suites with spa bath, the staterooms with balconies and outside views... In a harmonious brown and glacier blue colour scheme, this is the setting for your next voyage to the Poles!



Jean-Philippe Nuel

1



Jean-Philippe Nuel

2

1 - In your future stateroom, every detail of the interior design is created for your comfort and pleasure.

2 & 3 - On deck 8, the luxurious Owner's Suite and its bathroom.







The Antarctic

Heading for the White Continent

Explore the last pristine continent on the planet, a land full of extremes, where nature unveils its full, awesome power. In this setting of ice, rock and water, where the day stretches out without ever wanting to end, you will be lucky enough to witness a dreamlike spectacle. Aboard your Zodiac®, you will penetrate with respect and humility this world of silence, troubled only by the cracking of the icebergs and the twittering of the penguins, and discover the most secret places on earth.

Not to be missed
in the Antarctic

With *Le Commandant-Charcot*, we are going to sail beyond the Antarctic Peninsula and set off to explore the great White Continent, discovering landscapes of almost surreal beauty. In these almost explored places, both hostile and sublime, your voyage will take on another dimension: that of a journey marked by all the force and power of nature, but also by its immense fragility.





The emblematic wildlife of the great White Continent

A white desert exposed to the winds, a silent universe frozen by the ice... as hostile as it may seem, the southern continent is still home to rich and varied fauna. The penguins, in particular, show exceptional capacities for adapting to the polar climate, and are excellent swimmers. The largest among them, the emperor penguin, the real lord of the ice floe, is not so easily approached. All of the ice-sailing capabilities of *Le Commandant-Charcot* will have to be used to reach these enormous colonies grouped together on the edge of the continent, far inside the ice floe. Some of these colonies have never been observed, except by satellite! The waters here, particularly rich in nutrients, also facilitate the presence of many seals, sea lions, whales and orcas. Unafraid because of an almost total absence of human presence, these animals will offer you instants of pure wonderment.



A truly superlative continent

With icebergs measuring up to several thousand km² and mountainous summits almost 5,000 m high, Antarctica is impressive for its sheer scale. *Le Commandant-Charcot* will take you into the heart of these spectacular landscapes, to discover these extraordinary natural phenomena... After the “Roaring Forties” and the “Furious Fifties”, the “Screaming Sixties”, these legendary latitudes, where the wind and the sea meet no obstacles, will be our gateway to the great White Continent. The ice sheet looms, immense and immaculate. This immense ice sheet, several kilometres thick, covering almost the entire continent, extends to the sea, forming gigantic ice shelves, which calve the world’s most imposing icebergs (sometimes over 100 km long).



Exploration and science

Almost a century after the heroic age of exploration in the Antarctic, the White Continent still retains many of its mysteries today. Protected by a thick layer of ice floe for much of the year, this mythical land fascinates and intrigues. For the first time, thanks to *Le Commandant-Charcot*, discover these distant zones, while the surrounding waters are still frozen: an exceptional odyssey that remains inaccessible to traditional cruise ships. In keeping with the great polar explorations led by Captain Jean-Baptiste Charcot, we are going to combine tourist cruise with scientific research. Aboard *Le Commandant-Charcot*, a team of researchers will be able to make the most of our ship’s high-tech scientific facilities. Together we will discover what these unexplored lands hold in store.



In search of emperor penguin colonies

Emblematic of the Antarctic, emperor penguins are the largest and most majestic of all living penguin species. With *Le Commandant-Charcot* and the team of scientists on board, set off to find this marvel of nature, which symbolises how animals are able to adapt.

The Antarctic, a truly superlative continent, concentrates the harshest climatic conditions on the planet in winter, with temperatures falling below -90°C and winds at over 200 km/h. However, this is the moment that the emperor penguin has chosen to breed.

The emperor penguin is also one of these mysterious animals whose first egg was found by chance on the ice floe by the James Clark Ross expedition in 1840 and whose first colony was observed on Cape Crozier (Ross Sea) in 1902.

Four layers of scale-like feathers, a thick layer of fat, a circulatory system in which the veins and arteries are close together so as to minimise heat transfer at the extremities and other anatomical details make the emperor penguin the only animal in the world capable of living in such an environment. Other penguins, such as the gentoo, Adelie or chinstrap species, face the most extreme latitudes of the Antarctic only during the austral summer.

The Emperor Penguins of Bellingshausen Sea



Beyond Peter I Island and Charcot Island, this exceptional cruise will take you into the heart of the Bellingshausen Sea. Named in honour of the Russian admiral and explorer who discovered Antarctica in 1820, this sea in the Southern Ocean, covered by ice floe most of the time, is hard to reach and practically unexplored. But the reward lives up to the challenge: gigantic colonies of emperor penguins, a unique species endemic to the Antarctic and almost never observed, live here. This animal, elegant and majestic, is the promise of emotional encounters. In this season, as winter gradually gives way to the austral spring, the chicks, only a few weeks old, become independent and gather in immense “creches”: a magical spectacle to which you will be privileged witnesses.

Highlights*:

- **A unique opportunity to approach colonies of emperor penguins bringing together adults and young at the end of the austral winter.**
- Outings and shore visits in Zodiac® inflatables.
- Lectures and information sessions hosted by our naturalist-guides.
- Approach two islands beyond the Antarctic Polar Circle.
- Hiking opportunity.
- Landscapes: glaciers, icebergs, thick ice floes, ice shelves.
- Wildlife: emperor penguins, humpback whales, gentoo penguins, Weddell seals.



PUERTO MONTT - USHUAIA

19 days/18 nights - 1st November 2021

From € 22,290



DAY	ITINERARY*
	<i>One-night stay at the hotel in Santiago on the eve of embarkation.</i>
1	Flight Santiago (Chile)/Puerto Montt (Chile) <i>Welcome and transfer to the port.</i> Puerto Montt (Chile) - Departure: 18.00
2 to 4	<i>At sea</i>
5	Crossing the Antarctic Circle
6	<i>At sea</i>
7 & 8	Expedition to Charcot Island
9 & 10	Expedition to Peter I Island
11 & 12	English Coast - in search of emperor penguins
13	Marguerite Bay
14	Stonington Island Pourquoi Pas Island
15	The Gullet Detaille Island
16	<i>At sea</i>
17 & 18	Crossing the Drake Passage
19	Ushuaia (Argentina). <i>Disembarkation and transfer to the airport.</i> Flight Ushuaia (Argentina)/Santiago (Chile)

**Subject to ice and weather conditions. The expedition highlights and itineraries described above illustrate possible experiences only and cannot be guaranteed.*

The Weddell Sea & Larsen Ice Shelf



Insurmountable, extreme and captivating: this is the best way to describe the Weddell Sea, mostly frozen by a thick and compressed ice floe. It is a challenge and a privilege to sail on it, with its promise of exceptional landscapes and original encounters. As you advance across this immense polar expanse, you will enter an infinite ice desert, a world of silence where there is nothing but calm and serenity. To the north-west of the Weddell Sea, stretching along the eastern coast of the Antarctic Peninsula, stands an imposing ice shelf known as the Larsen Ice Shelf. An extension of the ice sheet onto the sea, this white giant is equally disturbing and fascinating, if only due to its colossal dimensions and the impressive table top icebergs - amongst the largest ever seen - that it generates. This voyage will be an opportunity to come as close as possible to the Weddell Sea, a real refuge for wildlife.

Highlights*:

- **Sail into the heart of the ice of the Weddell Sea, discovering the impressive Larsen Ice Shelf and its immense table top icebergs.**
- Outings and shore visits in Zodiac® inflatables.
- Lectures and information sessions hosted by our naturalist-guides.
- Landscapes: alpine landscapes, table top icebergs, glaciers, ice floes.
- Wildlife: Weddell seals, crabeater seals and leopard seals, Adelie penguins, humpback whales, sea birds.



USHUAIA - USHUAIA - 12 days/11 nights

3rd & 28th December 2021, 22nd January 2022, 14th & 25th March 2022

From € 12,250



DAY	ITINERARY*
	One-night stay at the hotel in Santiago on the eve of embarkation.
1	Flight Santiago (Chile)/Ushuaia (Argentina) Welcome and transfer to the port. Ushuaia (Argentina) - Departure: 18.00
2 & 3	Crossing the Drake Passage
4	South Shetland Islands
5	North Antarctic Peninsula
6	The Weddell Sea
7 & 8	Sailing toward Larsen Ice Shelf
8 & 9	The Weddell Sea
10 & 11	Crossing the Drake Passage
12	Ushuaia (Argentina) . Disembarkation and transfer to the airport. Flight Ushuaia (Argentina)/Santiago (Chile)

22nd January 2022 departure:
A cruise in partnership with **National Geographic Expeditions** offering enrichment with a Photographer and an Expert onboard.



*Subject to ice and weather conditions. The expedition highlights and itineraries described above illustrate possible experiences only and cannot be guaranteed.

Expedition to Charcot & Peter I Islands



Landing on Peter I Island is like landing on the moon! In fact, fewer people have visited this small volcanic island located in the Bellingshausen Sea, 450 km from the Antarctic coastlines, than have set foot on lunar soil. Discovered in February 1821, Peter I Island could only be approached for the first time in 1929, as the ice front made approach and disembarkation difficult. Its summit still remains untouched to this day. This unusual itinerary will also provide an opportunity to approach Charcot Island, thus named by Captain Charcot in memory of his father during its discovery in 1910.

Highlights*:

- Be among the few people on earth who have approached two islands beyond the Antarctic Polar Circle.
- Outings and shore visits in Zodiac® inflatables.
- Lectures and information sessions hosted by our naturalist-guides.
- Hiking opportunity.
- Wildlife: humpback whales, gentoo penguins, Weddell seals.



USHUAIA - USHUAIA - 15 days/14 nights
 19th November 2021, 14th December 2021,
 8th January 2022, 2nd February 2022
From € 14,440



DAY	ITINERARY*
1	One-night stay at the hotel in Santiago on the eve of embarkation. Flight Santiago (Chile)/Ushuaia (Argentina) . Welcome and transfer to the port. Ushuaia (Argentina) - Departure: 18.00
2 & 3	Crossing the Drake Passage
4	Crossing the Antarctic Circle Detaille Island
5	The Gullet Pourquoi Pas Island
6	Marguerite Bay
7 & 8	Expedition to Charcot Island
9 & 10	Expedition to Peter I Island
11	At sea
12	The Gullet
13 & 14	Crossing the Drake Passage
15	Ushuaia (Argentina) . Disembarkation and transfer to the airport. Flight Ushuaia (Argentina)/Santiago (Chile)

8th January 2022 departure:
 A cruise in partnership with **National Geographic Expeditions** offering enrichment with a Photographer and an Expert onboard.



*Subject to ice and weather conditions. The expedition highlights and itineraries described above illustrate possible experiences only and cannot be guaranteed.

The Ross Sea



Sailing the Ross Sea means discovering one of the most extreme and conserved universes in the Antarctic. Partially occupied by the Ross Ice Shelf, the largest ice platform in Antarctica, this immense bay located several hundred kilometres from the South Pole, is considered as “the last ocean”, the last intact marine ecosystem and the largest marine sanctuary since 2016. Here, the cold is more intense, the wind more powerful, the ice more impressive, and the scenery more spectacular... In the heart of this polar Garden of Eden, where the ice shelf turns into icebergs, you will encounter prodigious fauna, as well as surrealist landscapes, with infinite shades of blue and stunning reliefs. Antarctic petrels, Minke whales, orcas and seals are at home here, as are very large colonies of Adelie and emperor penguins.

Highlights*:

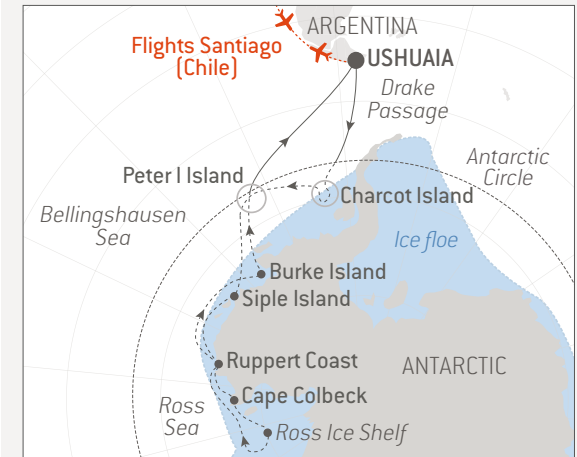
- Sail as close as possible to the South Pole, in the heart of the Ross Sea, one the world's last marine sanctuaries.
- Outings and shore visits in Zodiac® inflatables.
- Lectures and information sessions hosted by our naturalist-guides.
- Landscapes: icebergs, glaciers, ice floes, ice shelves.
- Wildlife: Adelie penguins, emperor penguins, Ross seals, crabeater seals, leopard seals, Minke whales, sea birds.



USHUAIA - USHUAIA

25 days/24 nights - 16th February 2022

From € 25,570



DAY	ITINERARY*
	<i>One-night stay at the hotel in Santiago on the eve of embarkation.</i>
1	Flight Santiago (Chile)/Ushuaia (Argentina) <i>Welcome and transfer to the port.</i>
	Ushuaia (Argentina) - Departure: 18.00
2 & 3	Crossing the Drake Passage
4	Crossing the Antarctic Circle
5	Expedition to Charcot Island
6	Expedition to Peter I Island
7 & 8	Bellingshausen Sea
9	<i>At sea</i>
10	Siple Island
11	<i>At sea</i>
12	Ruppert Coast
13	Cape Colbeck
14	The Ross Sea
15	The Ross Ice Shelf
16	<i>At sea</i>
17	Ruppert Coast
18	<i>At sea</i>
19	Burke Island
20 & 21	Expedition to Peter I Island
22	<i>At sea</i>
23 & 24	Crossing the Drake Passage
25	Ushuaia (Argentina) - Disembarkation and transfer to the airport. Flight Ushuaia (Argentina)/Santiago (Chile)

**Subject to ice and weather conditions. The expedition highlights and itineraries described above illustrate possible experiences only and cannot be guaranteed.*

The Weddell Sea & the South Sandwich Islands



From Patagonia, to the Antarctic peninsula, via South Georgia and the South Sandwich Islands, this all-new itinerary will take you into the heart of the Scotia Arc. This volcanic archipelago at the junction of the Andes cordillera and the Antarctic continent will be revealed to you in all its riches and splendour. All the wildlife of the Far South can be found there: king and gentoo penguins, elephant seals, fur seals mingle on the beautiful dark sand beaches... At sea, orcas, humpback whales and other cetaceans will escort you along your navigation through frozen waters. This cruise will also be an opportunity to discover four very different ecosystems, from the wooded heights of the Tierra del Fuego and the table top icebergs of the Weddell Sea to the glacier-covered mountains of the South Sandwich Islands and the snow-capped summits of South Georgia.

Highlights*:

- Discover an all-new itinerary along the Scotia Arc, between the Atlantic and Southern Oceans.
- Outings and shore visits in Zodiac® inflatables.
- Lectures and information sessions hosted by our naturalist-guides.
- Landscapes: volcanic mountains on the South Sandwich Islands, table top icebergs in the Weddell, glaciers, ice floes.
- Wildlife: king penguins, Adelie penguins, fur seals, elephant seals, whales, sea birds.



USHUAIA - MONTEVIDEO

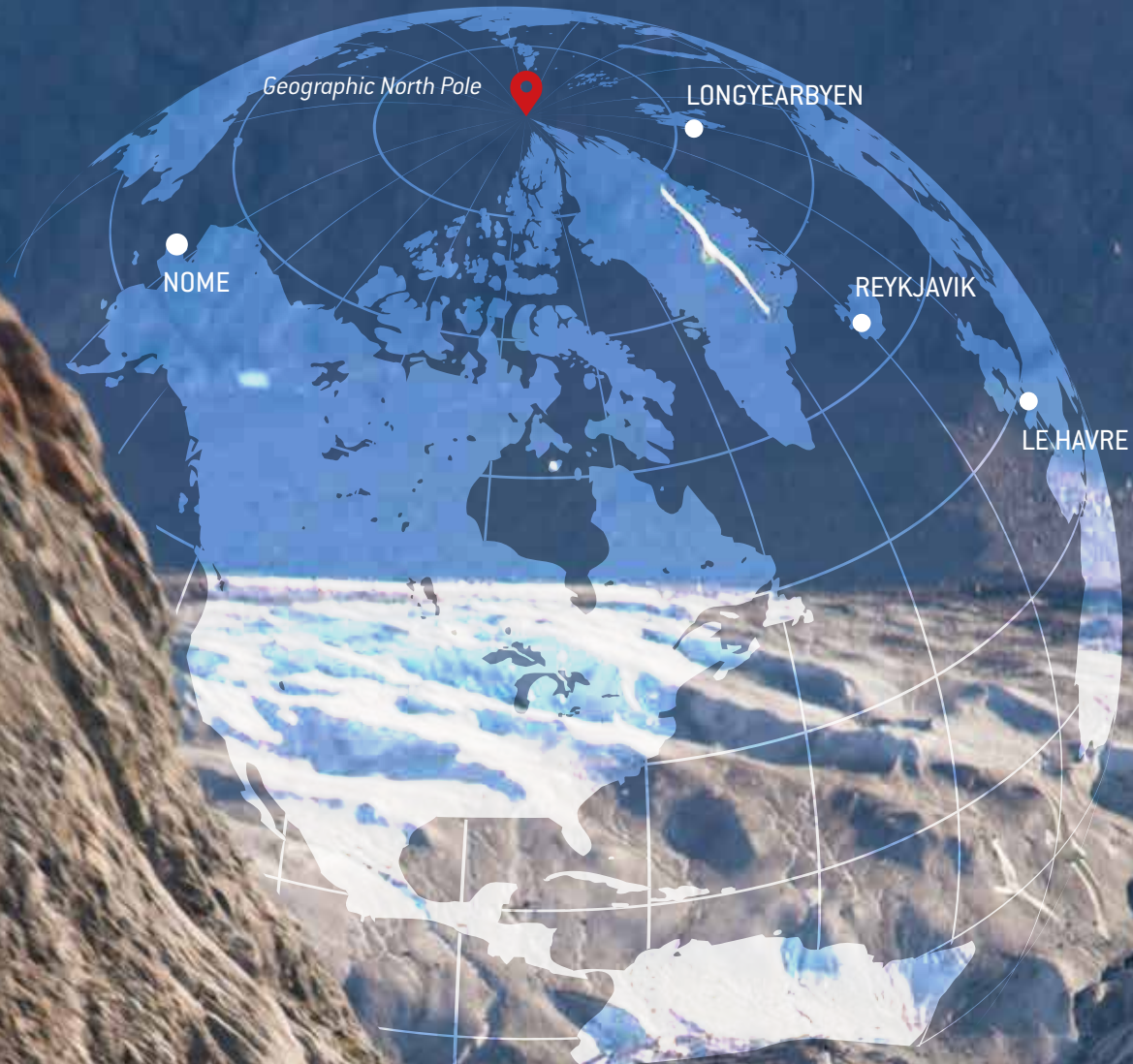
18 days/17 nights - 5th April 2022

From € 16,610



DAY	ITINERARY*
	One-night stay at the hotel in Santiago on the eve of embarkation.
1	Flight Santiago (Chile)/Ushuaia (Argentina) Welcome and transfer to the port. Ushuaia (Argentina) - Departure: 18.00
2 & 3	Crossing the Drake Passage
4	South Shetland Islands
5	North Antarctic Peninsula
6 & 7	The Weddell Sea
8	Southern Thule, South Sandwich Islands Cook Island, South Sandwich Islands
9	Saunders Island, South Sandwich Islands
10	Zavodovski Island, South Sandwich Islands
11	At sea
12 & 13	South Georgia
14 to 17	At sea
18	Montevideo (Uruguay). Disembarkation.

*Subject to ice and weather conditions. The expedition highlights and itineraries described above illustrate possible experiences only and cannot be guaranteed.





The Arctic

Heading for the North Pole

Come and have a formidable adventure in the planet's northernmost latitudes, and experience the emotion of inaugurating entirely new routes. Discover the ice continent in the company of our naturalist guides, meet the last hunters of the poles in their encampments, and approach the Arctic fauna in its last sanctuary.

Not to be missed
in the Arctic

Setting off to discover the Arctic means setting off to discover a world in which all of our usual frames of reference become useless. And as the voyage reaches the most extreme latitudes of the Far North, as the long polar night ends, the magic sets in...





In the footsteps of the great explorers

Since the Greek Pytheas left Marseille in 330 BC and arrived at the boundaries of the known world, probably Iceland, followed in around 1000 by the longboats of the intrepid Vikings, the ice continent has been a major magnet for explorers, the final frontier... Barents, Baffin, Bering, many would beat a path through these unknown lands that bear their names today. It was not until the beginning of the 20th century that Amundsen would finally cross the Northwest Passage (in 1906) and reach the Geographic North Pole (in 1926). Aboard *Le Commandant-Charcot*, PONANT offers you the exceptional possibility of an adventure following in the footsteps of these legendary explorers.



Encounters with the Inuit

During your cruise, experience the privilege of an unforgettable encounter with the Inuit, who perpetuate their ancestral way of life in the heart of the icy vastness of the Far North. Living from hunting and fishing, their day-to-day life is cadenced by their traditions and beliefs, rooted in shamanism and the respect owed to the spirits which, for them, inhabit each living creature. Even if the traditional dog sled may sometimes be abandoned in favour of the snowmobile, traces of the modern world remain limited here. In the muffled silence of the polar vastness, take the time to come and share the day-to-day life of the last hunters of the pole.



Polar fauna in the High Arctic

The itineraries of *Le Commandant-Charcot* in the Arctic will give you the possibility of observing the emblematic animals of the Arctic at latitudes and periods of the year that are normally inaccessible. You will certainly have the chance to come across the polar bear, the King of the Arctic, by observing a solitary male roaming the ice floe in search of the ideal hunting or fishing spot, or a mother followed by her cub. And let's not forget the slender Arctic fox and the huge herds of reindeer. As for the glacial waters of the Arctic Ocean, they are home to walrus, whales, orcas and narwhals, which are unafraid of people as a result of having so little contact with them.



Conquering the North Pole

Aboard *Le Commandant-Charcot*, PONANT invites you to experience the incredible saga of the North Pole conquest: an extraordinary journey in the footsteps of the many explorers who once attempted to approach this mythical point, but that only a few chosen ones were lucky enough to reach.

Who has never dreamed one day of reaching the edge of the world? As a source of dreams, myths and legends, human and technological exploits but also tragedies, the North Pole has never ceased to fascinate and challenge. Since Antiquity, we have imagined it as a land of plenty, one permanently bathed in sunshine. In the Middle Ages, we thought we would find paradise there. Then, over the centuries, as technical means improved, the quest for the North Pole became a strategic challenge, as commercial as it was political: navigators hoped to discover the fastest route between the East and the West and set foot on the ice of this highly symbolic place. Thus began a real global race towards the planet's northernmost point, leading to one of the greatest controversies in the history of exploration: while the American Robert Peary was officially recognised as the first man to reach the Pole in 1909, his compatriot, Frederick Cook, claimed to have accomplished the same feat the previous year. As for the Frenchman Jean-Louis Étienne, he was the first to reach the North Pole alone and on skis in 1986.

You too can come and attempt the North Pole adventure!



The Geographic North Pole



90° north latitude! The objective of this exceptional cruise is the geographic North Pole, a mythical point covered by ice floe all year round, 700 km away from any emerged land; it has fascinated generations of explorers and, to this day, very few people have reached it. Leaving from Spitsbergen, the cruise through sumptuous landscapes that constantly change depending on the movements of the ice and the luminosity lends itself perfectly to the observation of fauna, which is particularly rich at this time of year. *Le Commandant-Charcot* will then start to move through the pack ice in the direction of the Holy Grail of all polar explorers: the North Pole! Beware though, as the ice floe is constantly drifting, you too must keep moving if you want to remain on our planet's most northernmost point...

Highlights*:

- **Be among the few people in the world who have reached the Geographic North Pole!**
- Outings and shore visits in Zodiac® inflatables with the naturalists.
- Hiking opportunity.
- Landscapes: ice floes, icebergs, polar ice cap... In Spitsbergen, jagged mountains, steep-sided valleys, sheer cliffs, huge glaciers.
- Wildlife: polar bears, Arctic foxes, Svalbard reindeer, Arctic terns, walrus, seals, whales.



LONGYEARBYEN - REYKJAVIK

24th July and 23rd August 2021

REYKJAVIK - LONGYEARBYEN

8th August 2021

16 days/15 nights

From € 24,010



DAY	ITINERARY*
1	Flight Paris/Longyearbyen, Spitsbergen (Norway) Welcome and transfer to the port. <i>Embarkation from 16.00 to 17.00 - Departure: : 18.00</i>
2	<i>At sea along Spitsbergen</i>
3 to 7	<i>Sailing ice floes</i>
8	<i>Geographic North Pole</i>
9 to 13	<i>Sailing ice floes along Greenland</i>
14 & 15	<i>At sea</i>
16	Reykjavik (Iceland) <i>Arrival 7.00 - Disembarkation</i>

This cruise operates in both directions.

**Subject to ice and weather conditions. The expedition highlights and itineraries described above illustrate possible experiences only and cannot be guaranteed.*

In the Wake of Captain Jean-Baptiste Charcot



You'll be setting off in the wake of the celebrated French explorer, Jean-Baptiste Charcot, leaving from Le Havre and Saint-Malo, where his famous polar exploration vessel, *Le Pourquoi-Pas?*, was constructed. You'll discover the emblematic and memorable sites of his polar and scientific adventure... from Iceland, which was so dear to his heart, to Greenland's Blossville Coast, which he mapped, via the island of Jan Mayen, which exercised a certain fascination over him, or near Scoresby Sund, the largest fjord system in the world, the south of Liverpool Land. During a particularly rich season, the Arctic will reveal itself to you as you'd always imagined it: clad in a thick ice sheet, with sparkling reflections, on which seals and polar bears lounge in enchanted silence.

Highlights*:

- **Sailing past Rockall: the summit of an extinct volcano rising in the middle of the North Atlantic.**
- **The never-explored Blossville Coast and its thick layer of ice come straight from the North Pole.**
- **Ittoqqortoormiit, one of Greenland's most isolated towns, located south of Liverpool Land, where you'll discover the life of the pole's last hunters.**
- Alftanes: where the *Pourquoi Pas?* was wrecked in 1936. The wreck is still there at a depth of less than 20 m.
- Liverpool Land, in the north-east of Greenland, and its jagged mountains, hollowed out by gigantic glaciers that make it possible to study the effects of global warming.
- Jan Mayen, an island lost out in the Greenland Sea, and its famous Beerenberg (2,277 metres), known for being the world's northernmost subaerial active volcano.



LE HAVRE – REYKJAVIK

15 days/14 nights

31st May 2021

From € 15,920

INAUGURAL
CRUISE



DAY	ITINERARY*
1	Le Havre (France) Departure: : 18.00
2	Saint-Malo (France)
3 & 4	At sea
5	Sailing in front of the islet of Rockall
6	At sea
7	Alftanes (Iceland)
8	At sea
9	D'Aunay Bay, Blossville Coast (Greenland)
10 & 11	Exploration of Liverpool Land (Greenland)
12	Jan Mayen Island (Norway)
13 & 14	At sea
15	Reykjavik (Iceland) Arrival 7.00 - Disembarkation

*Subject to ice and weather conditions. The expedition highlights and itineraries described above illustrate possible experiences only and cannot be guaranteed.

At the Genesis of the French Polar Expeditions



The Blosseville Coast in eastern Greenland is fascinating for both its landscapes and its history. It was identified in 1833 by the French naval officer and explorer Jules de Blosseville, whose enigmatic wreck would lead to one of the biggest French exploration missions. Visit these wild shores and discover sites that are emblematic of polar exploration: Nansen Harbor, the Ammassalik region and, finally, the famous Blosseville Coast. As you follow in the wake of great French explorers such as Jules de Blosseville, Jean-Baptiste Charcot and Paul-Émile Victor who discovered this region that had long remained isolated due to its inaccessibility, experience a true immersion in the heart of this icy realm. You will get as close as possible to the ice sheet. Covering 80% of Greenland, it is the second largest ice mass on the planet after the Antarctica Ice Sheet.

Highlights*:

- **Following in the footsteps of the great explorers on Greenland's east coast, you will be immersed in the heart of this hostile yet peaceful icy realm.**
- **Ammassalik: experience an exceptional encounter with the Inuit in the village of Tasiilaq, located on this small island discovered in 1882.**
- D'Aunay Bay: Jean-Baptiste Charcot's first stop on his expedition to map this coast.
- The never-explored Blosseville Coast and its thick layer of ice come straight from the North Pole.
- A rich fauna: polar bears, seals, Arctic foxes and hares, sea birds.



REYKJAVIK - REYKJAVIK

11 days/10 nights

14th June 2021

From € 10,810



DAY	ITINERARY*
1	Reykjavik (Iceland) Departure: : 18.00
2	At sea
3	Nansen Harbor (Greenland)
4	Ammassalik Region (Greenland)
5	Storo Island (Greenland)
6	Kangerlussuaq (East Greenland)
7	Exploration of Blosseville Coast (Greenland)
8	D'Aunay Bay, Blosseville Coast (Greenland)
9	Ittoqqortoormiit Region (Greenland)
10	At sea
11	Reykjavik (Iceland) Arrival 7.00 - Disembarkation

*Subject to ice and weather conditions. The expedition highlights and itineraries described above illustrate possible experiences only and cannot be guaranteed.

Discovering the Northeast Greenland National Park



Over the course of this new itinerary designed in collaboration with NATIONAL GEOGRAPHIC, you will sail along the Northeast Greenland National Park, a UNESCO biosphere reserve and the world's largest national park. It represents nearly 45% of Greenland. Here, you will find no trace of human life, but rather alpine landscapes in surreal colours as far as the eye can see, as well as powerful glaciers. In this early summer period the sea ice breaks up, enabling the animals to get closer to the coast. These are optimal conditions for observing the exceptional Arctic wildlife. Before making your way to Reykjavik, you will attempt to reach Île-de-France, discovered by the Duke of Orleans in 1905. This particularly remote region is protected by thick ice cap, brought directly from the North Pole by the transpolar current.

Highlights*:

- Discover Kalaallit Nunaanni nuna eqqissimatitaaq, the world's largest national park, at the magical time when nature awakens. This is an especially remote and uninhabited region.
- Visit the old Norwegian trapper cabins that added a special flavour and richness to Jørn Riel's series of Arctic tales about the people of Greenland.
- A cruise in partnership with National Geographic Expeditions offering enrichment with a National Geographic Photographer and an Expert specialised in the destination onboard.
- An impressive geological journey amid the mountains striped with strata of all different colours and the hummocks, knolls of ice rising from the ice sheet.



REYKJAVIK – REYKJAVIK

13 days/12 nights

24th June 2021

From € 15,600



DAY	ITINERARY*
1	Reykjavik (Iceland) Departure: 18.00
2 & 3	At sea
4	Dodmansbugten (Greenland)
5	Danmarkshavn (Greenland)
6	Exploration of Northeast Greenland National Park
7	Mallekukfjeld (Greenland)
8	Île-de-France (Greenland)
9	Myggbukta (Greenland)
10	Exploration of Liverpool Land (Greenland)
11 & 12	At sea
13	Reykjavik (Iceland) Arrival 7.00 - Disembarkation

*Subject to ice and weather conditions. The expedition highlights and itineraries described above illustrate possible experiences only and cannot be guaranteed.

The Northwest Passage



Long fantasised over, many times sought after, and then forgotten due to the numerous unsuccessful exploration attempts, the Northwest Passage was only discovered at the beginning of the 20th century. A real labyrinth of channels covered by ice for much of the year, this maritime zone located beyond the Arctic Circle will provide you with a unique sailing experience. From Iceland to Alaska, you will take an all-new itinerary, via the most emblematic — and most difficult to reach — sites of the polar adventures once undertaken by John Franklin, Robert McClure or Roald Amundsen. In particular, you will cross the Bellot Strait, a key point of the Northwest Passage, and sail along Banks Island, famous for the wreck of HMS Investigator lying off shore, but also for its national park, which is home to extremely rich fauna. Crossing the Fury and Hecla Strait, which is constantly congested with ice and impassable for most ships, will also be one of the highlights of your cruise.

Highlights*:

- **Crossing the Northwest Passage to discover the most remote places and most emblematic waterways of this legendary maritime zone.**
- **Visit of a traditional Inuit village at the entrance to the Fury and Hecla Strait.**
- Outings and shore visits in Zodiac® inflatables with the naturalists.
- Discovery of the Aulavik National Park, renowned for the largest concentration of musk oxen in the world.
- Landscapes: vast expanses of ice floe, myriads of “jagged” islands, blue-toned glaciers, mountain chains, expanses of tundra, vertiginous walls.
- Fauna: Arctic foxes, sea birds, narwhals, belugas, walruses and the possibility of seeing polar bears.



REYKJAVIK - NOME

25 days/24 nights

7th September 2021

From € 31,370



DAY	ITINERARY*
1	Reykjavik (Iceland) Departure: 18.00
2	At sea
3 & 4	Greenland South Coast
5 & 6	At sea
7 to 10	Hudson Strait
11 & 12	Fury and Hecla Strait
13 & 14	Bellot Strait
15 to 17	Sailing ice floes in the north of the Arctic archipelago
19 & 20	Banks Island
21 to 24	Sailing ice floes in Beaufort Sea
25	Nome, Alaska (United States) Disembarkation and transfer: Flight Nome / Seattle

*Subject to ice and weather conditions. The expedition highlights and itineraries described above illustrate possible experiences only and cannot be guaranteed.





Le Commandant-Charcot, the world's first luxury polar exploration vessel

**An hybrid propulsion combining liquefied natural gas (LNG)
and electric generators**

Le Commandant-Charcot has been designed to minimise the environmental impact of travel in the furthest latitudes. It will also host a scientific research laboratory equipped to study the ecosystems and biodiversity of this polar setting in perpetual change.

A responsible naval conception

Mode of propulsion, energy optimisation, cutting-edge technologies, choice of fuels... PONANT is increasingly establishing itself as a pioneering ship-owner in the conception and operation of ships.

Le Commandant-Charcot, like all our ships, will be “clean ship” certified, exceeding the currently applicable environmental regulations:

- Reduction of SOx, Nox, CO2 and particle emissions thanks to the use of LNG
- Digital navigation assistance to reduce fuel consumption
- Optimised power output
- Zero emissions and noise reduction in hybrid electric mode
- Recycling of waste
- Advanced wastewater treatment system



Powered by
liquified natural Gas
(LNG)



Energy Optimisation
System



Latest generation
electric batteries
to reduce energy
consumption



Advanced Wastewater
Treatment System



Waste Heat Recovery
System

PONANT is a full and proud member of the International Association of Antarctica Tour Operators (IAATO). IAATO is an industry group organisation that sets the highest possible tourism operating standards in an effort to ensure appropriate, safe and environmentally sound travel to Antarctica. Its rules include guidelines about the maximum number of guests during shore landings, and other specific guidelines about wildlife watching, visitor briefings and key safety obligations on operators.

In the Arctic, PONANT is a member of AECO, the Association of Arctic Expedition Cruise Operators. AECO is dedicated to managing responsible, environmentally friendly and safe tourism in the Arctic.





“We systematically do an inventory of the biodiversity (flora, fauna and geology) of the area where we intend to land, so as to study the environmental impact. At this stage of the study, we also check for the presence of dangerous animals and evaluate the state of the ecosystems to ensure that there is no risk for the guests who are landing. We also plan the access roads and paths. The challenge lies in minimising the impact on the environment as much as possible and ensuring that it is of a temporary nature.”

Nicolas DUBREUIL
PONANT Director of Expedition Cruises and Sustainability



“With its hybrid ‘dual fuel/LNG’ and electric propulsion system, the PONANT polar exploration ship symbolises the culmination of the company’s efforts to reduce its environmental impact. Its main innovation resides in its use of LNG, a fuel that reduces SO₂, NO_x, CO₂ and particle emissions to levels well below those required by the IMO 2020 (International Maritime Organisation). By 2021 onwards, the ship will not even produce a single particle emission in hybrid electric mode in polar regions. Just like the rest of the entire PONANT fleet, the vessel will be ‘Clean Ship’ certified. This international certification, administered by the Paris-based Bureau Veritas agency, attests to the optimal environmental performance of the ships that receive it.”

Mathieu PETITEAU
Newbuilding and R&D Director



*"Silarsuaq sikullu kisimti
naagalavoq"*

Only time and ice are masters. The Greenlandic proverb perfectly encapsulates the all-consuming power of nature, and reminds us that in these extreme latitudes, it is the elements that dictate their law.

Working with nature

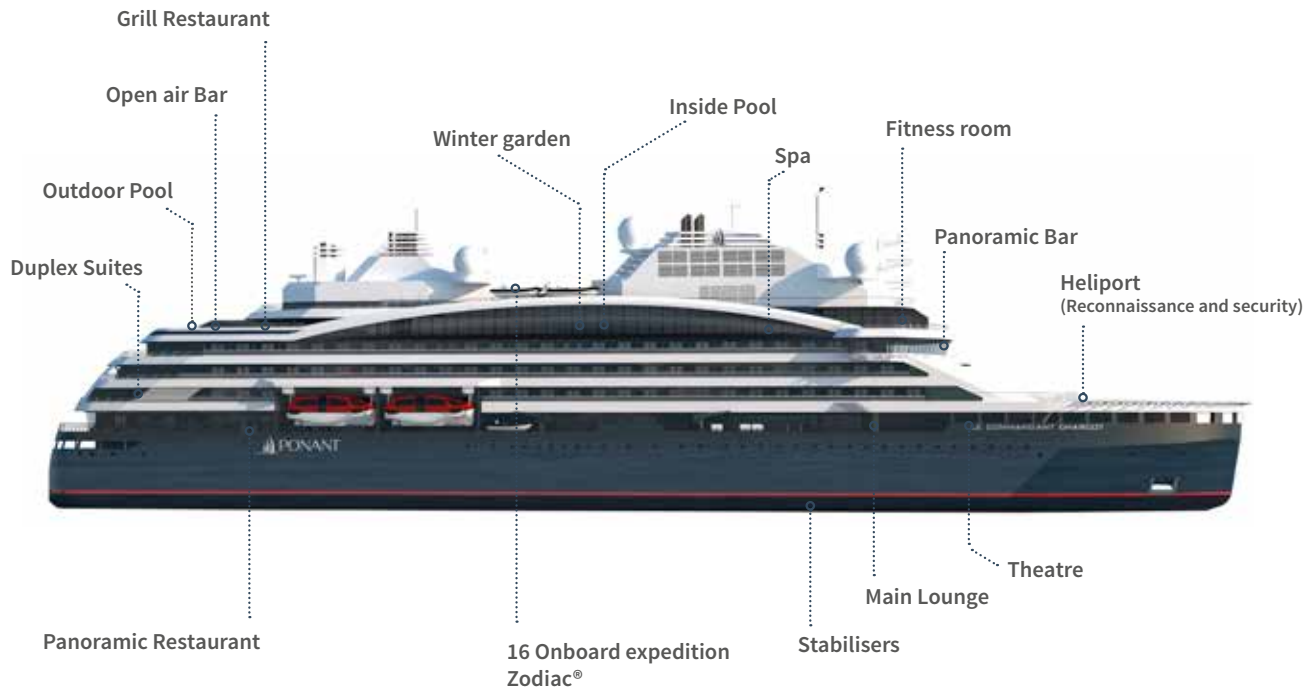
Even with the most recent, high-performance onboard technology, caution is the watchword to ensure totally safe sailing. The itineraries of *Le Commandant-Charcot* in the Arctic and Antarctica are designed to avoid any forced passage and to ensure, as far as is possible, accessibility to the joys of the polar regions. But in this constantly changing environment, humility and respect for the natural forces at play must be the priority.

Ice navigation

The thickness of the ice is constantly changing, and the challenge of sailing in these regions is to find the ideal route which allows the ship to make the most of the cracks existing between two sheets, charting a course through the channels which have formed naturally in the ice. To achieve this, PONANT has developed innovative routing software based on historical weather patterns and ice thicknesses throughout the seasons, in order to predict the behaviour of the ice in the coming five days, and optimise the route according to the weather forecasts. However, the ship is powerful enough to sail through the pressure ridges that form when two sheets collide with each other, and to extricate itself from the dense sea ice in order to reach open water.

A technological revolution

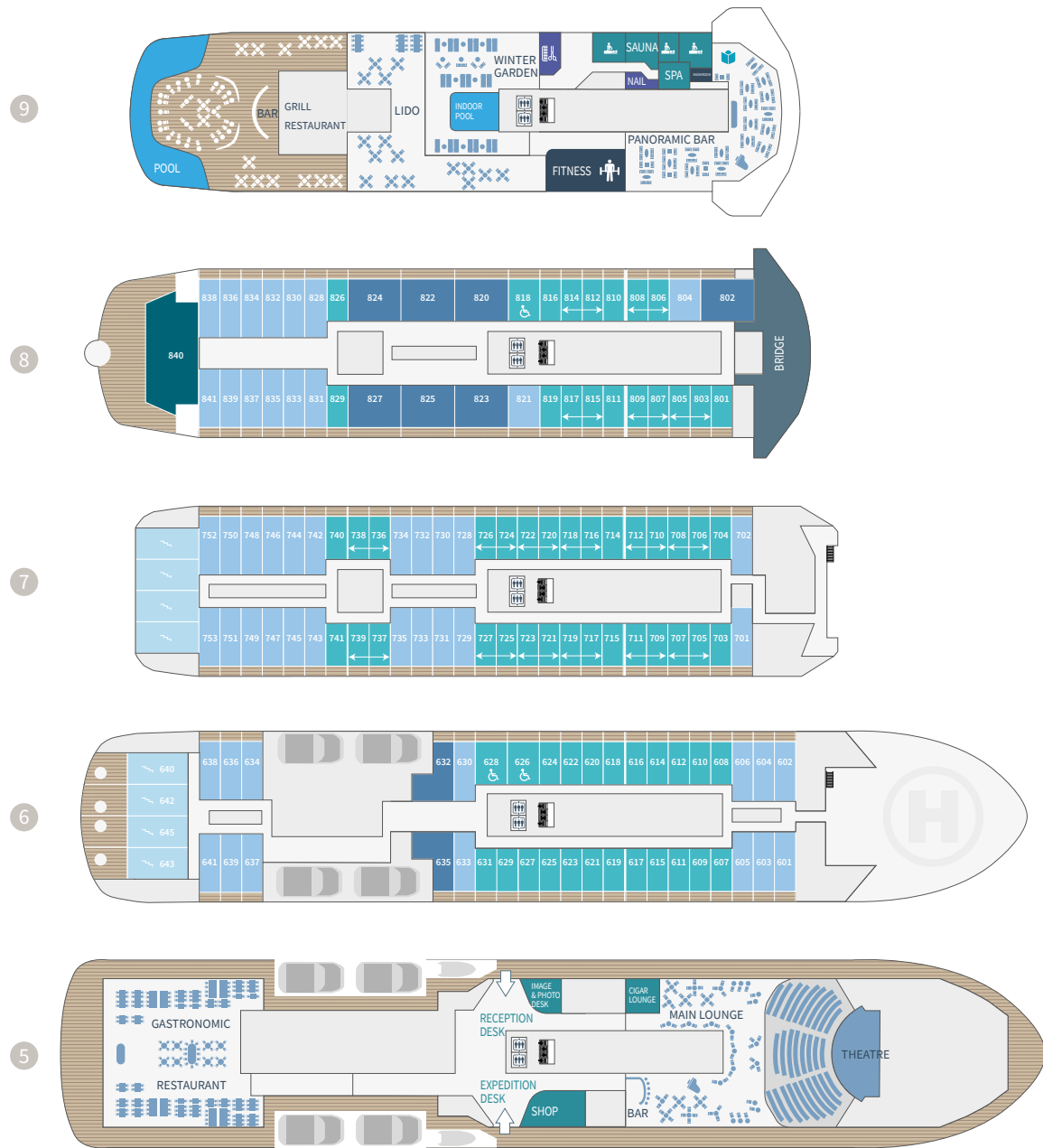
To design this exceptional polar vessel, PONANT joined forces with **Aker Arctic**, global specialist in ice-sailing technologies. The PC2 polar hull of this hybrid ship was specially developed with an innovative design, making it the most powerful High Polar Exploration Vessel in the world. As a result, *Le Commandant-Charcot* will be able to achieve unrivalled sailing performances, even in the most difficult conditions imposed by these challenging environments.



Technical specifications

Length:	150 m
Width:	28 m
Draught:	10 m
Ice Class:	PC2
Propulsion:	LNG & Hybrid Electric
Shipyard:	VARD
Classification:	Bureau Veritas
Flag:	French
Crew members:	190
Onboard expedition Zodiac® dinghies:	16
Staterooms and Suites:	135 (including 31 suites)
Panoramic Restaurant:	1
Grill Restaurant:	1
Pool area:	2 (Indoor Pool and winter garden, Outdoor Pool)
Spa, Sauna, Fitness room:	1

Deck Plans*

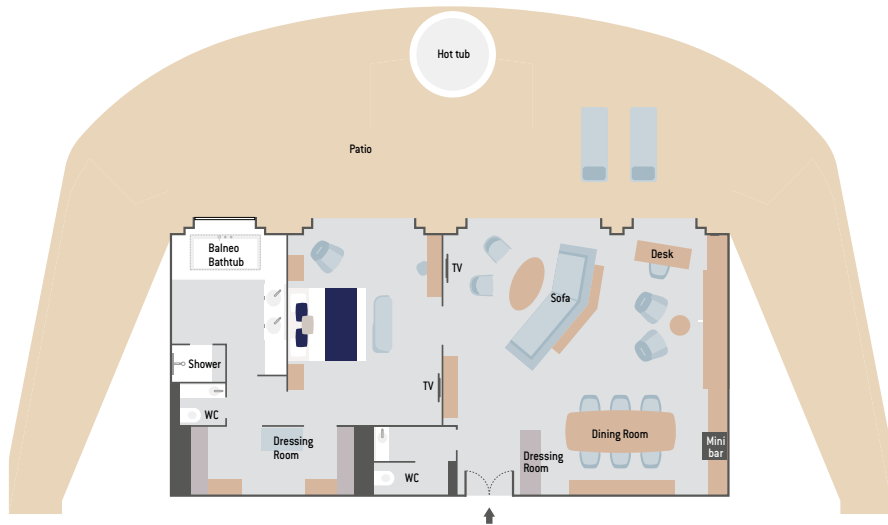


- 9 Grill Restaurant – Lido – Panoramic Bar and Lounge – Fitness – PONANT Yacht SPA (Snow-Room – Massage Rooms – Sauna – Nail Shop – Hairdresser) – Winter Garden – Pools (Inside and Outside) – Open-air Bar – Library
- 8 Owner’s Suite – 14 Privilege Staterooms – 7 Privilege Suites – 18 Prestige Staterooms (including 1 for person of reduced mobility and 10 Prestige Staterooms convertible into 5 Prestige Suites) – Bridge
- 7 22 Privilege Staterooms – 30 Prestige Staterooms (including 24 Prestige Staterooms convertible into 12 Prestige Suites)
- 6 4 Duplex Suites – 2 Privilege Suites – 14 Privilege Staterooms – 23 Prestige Staterooms (including 2 Prestige Staterooms for person of reduced mobility)
- 5 Gastronomic Restaurant – Theatre – Main Lounge – Cigar Lounge – Shop – Reception Desk – Expedition Desk – Image & Photo Desk
- 4 Medical centre

- Prestige Stateroom (Deck 6 - 7 - 8)
- Privilege Stateroom (Deck 6 - 7 - 8)
- Prestige Suite (Deck 7 - 8)
- Privilege Suite (Deck 6 - 8)
- Duplex Suite
- Owner's Suite

(*Non-contractual plans, ship under construction)

Stateroom Plans*

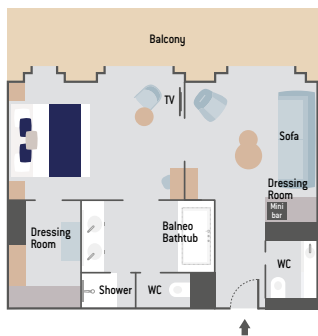


OWNER'S SUITE (115 sq.m +186 sq.m private terrace with hot tub - Balneo bathtub) / (1237 sq.ft +2002 sq.ft private terrace with hot tub - Balneo bathtub)



4 DUPLEX SUITES
(94 sq.m + 26 sq.m private terrace with hot tub - Balneo bathtub) / (1011 sq.ft + 279 sq.ft private terrace with hot tub - Balneo bathtub)

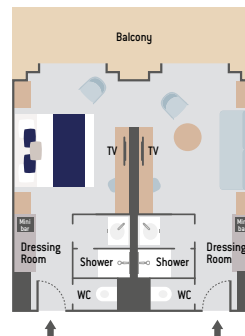
9 PRIVILEGE SUITES
(48 sq.m + 12.5 sq.m private balcony - Balneo bathtub) / (516 sq.ft + 134.5 sq.ft private balcony - Balneo bathtub)



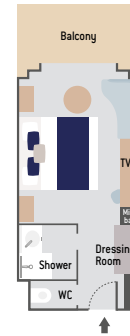
50 PRIVILEGE STATEROOMS
(28 sq.m + 5 sq.m private balcony) / (301 sq.ft + 53 sq.ft private balcony)



17 PRESTIGE SUITES
(40 sq.m + 10 sq.m private balcony) / (430 sq.ft + 107 sq.ft private balcony)



71 PRESTIGE STATEROOMS
(20 sq.m + 5 sq.m private balcony) / (215 sq.ft + 53 sq.ft private balcony)



(*Non-contractual plans, ship under construction)

Public areas:

LOBBY 177 sq.m / 1905 sq.ft - Reception/concierge desk, expeditions desk, Hospitality & Travel Manager office, boutique, image & photo desk

LOUNGES

- **Main Lounge** 302 sq.m – 3250 sq.ft and 28 sq.m - 301 sq.ft - Cigar lounge - Afternoon tea, lounge, live music on selected evenings.
- **Panoramic Bar and Lounge** 400 sq.m - 4305 sq.ft - Capacity: 88
- **Open-air Bar**

RESTAURANTS

- **Gastronomic Restaurant** 484 sq.m - 5209 sq.ft - Capacity: 284
Elegant main dining room for breakfast, lunch and dinner serving French and international cuisine, fine wine cellar.
- **Grill Restaurant – Lido** 320 sq.m - 3444 sq.ft - Outside capacity Grill: 62
Outside capacity Lido: 70 - Inside capacity: 150 Casual eating venue for breakfast, buffet lunch and themed dinner

RECREATION / RELAXATION

- **16 Zodiac®**
- **Fitness & Beauty Corner:** Fitness room: Elliptic, running machines, bicycles... Beauty Corner: Hairdresser, Massage rooms, Sauna, Snow-Room, Nail Shop.
- **Pool area:** Indoor Pool and winter garden - Outdoor Pool
- **Theatre:** Capacity: 270-276 - Main show room for conferences and live entertainment on selected evenings - State-of-the-art audio and video technology
- **Leisure area:** Public areas - Library - Medical centre

Amenities:

- Balcon or Terrace (Duplex Suites, Owner's Suite)
- Individually-controlled airconditioning
- Stateroom layout: king-size bed, or twin beds, communicating Staterooms available, children welcome
- Minibar - 24hr room service
- Flat screen satellite TV
- Video on demand
- iPod™ docks
- Safe
- French bath products
- Dressing table, bath robes, Hairdryer
- Direct line telephone
- 110V American (two flat pins)/220V European (round sockets with two round pins)
- Internet access Wifi
- Butler service (Owner's Suite, Duplex Suites, Privilege Suites)

Price List - 2021 - 2022 Antarctic departures

The rates of our cruises are per person, based on a double occupancy and including taxes.

For single occupancy rates, please contact us.

For details, please refer to the General and Particular Terms and Conditions of Sales, see pages 61 to 66.

<p>PUERTO MONTT • USHUAIA on 1st November 2021; 18 nights The Emperor Penguins of Bellingshausen Sea</p> <p>POINANT BONUS Up to -25%</p> <table border="1"> <tr><td>Prestige Stateroom - Deck 6</td><td>€ 28,820</td><td>€ 22,290</td></tr> <tr><td>Prestige Stateroom - Deck 7</td><td>€ 29,360</td><td>€ 22,700</td></tr> <tr><td>Prestige Stateroom - Deck 8</td><td>€ 29,900</td><td>€ 23,100</td></tr> <tr><td>Privilege Stateroom - Deck 6</td><td>€ 35,570</td><td>€ 27,350</td></tr> <tr><td>Privilege Stateroom - Deck 7</td><td>€ 36,920</td><td>€ 28,370</td></tr> <tr><td>Privilege Stateroom - Deck 8</td><td>€ 38,270</td><td>€ 29,380</td></tr> <tr><td>Prestige Suite - Deck 7</td><td>€ 49,070</td><td>€ 37,480</td></tr> <tr><td>Prestige Suite - Deck 8</td><td>€ 50,420</td><td>€ 38,490</td></tr> <tr><td>Privilege Suite</td><td>€ 53,120</td><td>€ 40,520</td></tr> <tr><td>Duplex Suite</td><td>€ 74,720</td><td>€ 56,720</td></tr> <tr><td>Owner's Suite</td><td>€ 85,520</td><td>€ 85,520</td></tr> <tr><td>Safety and port taxes (included)</td><td>€ 900</td><td></td></tr> <tr><td>Chartered flight (included)</td><td>€ 1,780</td><td></td></tr> <tr><td>Airport taxes (included)</td><td>€ 40</td><td></td></tr> </table>	Prestige Stateroom - Deck 6	€ 28,820	€ 22,290	Prestige Stateroom - Deck 7	€ 29,360	€ 22,700	Prestige Stateroom - Deck 8	€ 29,900	€ 23,100	Privilege Stateroom - Deck 6	€ 35,570	€ 27,350	Privilege Stateroom - Deck 7	€ 36,920	€ 28,370	Privilege Stateroom - Deck 8	€ 38,270	€ 29,380	Prestige Suite - Deck 7	€ 49,070	€ 37,480	Prestige Suite - Deck 8	€ 50,420	€ 38,490	Privilege Suite	€ 53,120	€ 40,520	Duplex Suite	€ 74,720	€ 56,720	Owner's Suite	€ 85,520	€ 85,520	Safety and port taxes (included)	€ 900		Chartered flight (included)	€ 1,780		Airport taxes (included)	€ 40		<p>USHUAIA • USHUAIA on 22nd January 2022; 11 nights The Weddell Sea & Larsen Ice Shelf</p> <p>NATIONAL GEOGRAPHIC PONANT EXPEDITIONS</p> <p>POINANT BONUS Up to -30%</p> <table border="1"> <tr><td>Prestige Stateroom - Deck 6</td><td>€ 18,770</td><td>€ 13,810</td></tr> <tr><td>Prestige Stateroom - Deck 7</td><td>€ 19,110</td><td>€ 14,040</td></tr> <tr><td>Prestige Stateroom - Deck 8</td><td>€ 19,450</td><td>€ 14,280</td></tr> <tr><td>Privilege Stateroom - Deck 6</td><td>€ 23,040</td><td>€ 16,790</td></tr> <tr><td>Privilege Stateroom - Deck 7</td><td>€ 23,890</td><td>€ 17,390</td></tr> <tr><td>Privilege Stateroom - Deck 8</td><td>€ 24,740</td><td>€ 17,980</td></tr> <tr><td>Prestige Suite - Deck 7</td><td>€ 31,580</td><td>€ 22,770</td></tr> <tr><td>Prestige Suite - Deck 8</td><td>€ 32,430</td><td>€ 23,370</td></tr> <tr><td>Privilege Suite</td><td>€ 34,140</td><td>€ 24,570</td></tr> <tr><td>Duplex Suite</td><td>€ 47,800</td><td>€ 34,130</td></tr> <tr><td>Owner's Suite</td><td>€ 54,630</td><td>€ 54,630</td></tr> <tr><td>Safety and port taxes (included)</td><td>€ 550</td><td></td></tr> <tr><td>Chartered flight (included)</td><td>€ 1,650</td><td></td></tr> <tr><td>Airport taxes (included)</td><td>€ 40</td><td></td></tr> </table>	Prestige Stateroom - Deck 6	€ 18,770	€ 13,810	Prestige Stateroom - Deck 7	€ 19,110	€ 14,040	Prestige Stateroom - Deck 8	€ 19,450	€ 14,280	Privilege Stateroom - Deck 6	€ 23,040	€ 16,790	Privilege Stateroom - Deck 7	€ 23,890	€ 17,390	Privilege Stateroom - Deck 8	€ 24,740	€ 17,980	Prestige Suite - Deck 7	€ 31,580	€ 22,770	Prestige Suite - Deck 8	€ 32,430	€ 23,370	Privilege Suite	€ 34,140	€ 24,570	Duplex Suite	€ 47,800	€ 34,130	Owner's Suite	€ 54,630	€ 54,630	Safety and port taxes (included)	€ 550		Chartered flight (included)	€ 1,650		Airport taxes (included)	€ 40		<p>USHUAIA • USHUAIA on 28th December 2021; 11 nights The Weddell Sea & Larsen Ice Shelf</p> <p>POINANT BONUS Up to -30%</p> <table border="1"> <tr><td>Prestige Stateroom - Deck 6</td><td>€ 17,930</td><td>€ 13,190</td></tr> <tr><td>Prestige Stateroom - Deck 7</td><td>€ 18,250</td><td>€ 13,410</td></tr> <tr><td>Prestige Stateroom - Deck 8</td><td>€ 18,580</td><td>€ 13,640</td></tr> <tr><td>Privilege Stateroom - Deck 6</td><td>€ 22,010</td><td>€ 16,040</td></tr> <tr><td>Privilege Stateroom - Deck 7</td><td>€ 22,830</td><td>€ 16,620</td></tr> <tr><td>Privilege Stateroom - Deck 8</td><td>€ 23,640</td><td>€ 17,180</td></tr> <tr><td>Prestige Suite - Deck 7</td><td>€ 30,180</td><td>€ 21,760</td></tr> <tr><td>Prestige Suite - Deck 8</td><td>€ 30,990</td><td>€ 22,330</td></tr> <tr><td>Privilege Suite</td><td>€ 32,630</td><td>€ 23,480</td></tr> <tr><td>Duplex Suite</td><td>€ 45,690</td><td>€ 32,620</td></tr> <tr><td>Owner's Suite</td><td>€ 52,230</td><td>€ 52,230</td></tr> <tr><td>Safety and port taxes (included)</td><td>€ 550</td><td></td></tr> <tr><td>Chartered flight (included)</td><td>€ 1,550</td><td></td></tr> <tr><td>Airport taxes (included)</td><td>€ 40</td><td></td></tr> </table>	Prestige Stateroom - Deck 6	€ 17,930	€ 13,190	Prestige Stateroom - Deck 7	€ 18,250	€ 13,410	Prestige Stateroom - Deck 8	€ 18,580	€ 13,640	Privilege Stateroom - Deck 6	€ 22,010	€ 16,040	Privilege Stateroom - Deck 7	€ 22,830	€ 16,620	Privilege Stateroom - Deck 8	€ 23,640	€ 17,180	Prestige Suite - Deck 7	€ 30,180	€ 21,760	Prestige Suite - Deck 8	€ 30,990	€ 22,330	Privilege Suite	€ 32,630	€ 23,480	Duplex Suite	€ 45,690	€ 32,620	Owner's Suite	€ 52,230	€ 52,230	Safety and port taxes (included)	€ 550		Chartered flight (included)	€ 1,550		Airport taxes (included)	€ 40		<p>USHUAIA • USHUAIA on 3rd December 2021, 14th and 25th March 2022; 11 nights The Weddell Sea & Larsen Ice Shelf</p> <p>POINANT BONUS Up to -30%</p> <table border="1"> <tr><td>Prestige Stateroom - Deck 6</td><td>€ 16,540</td><td>€ 12,250</td></tr> <tr><td>Prestige Stateroom - Deck 7</td><td>€ 16,840</td><td>€ 12,460</td></tr> <tr><td>Prestige Stateroom - Deck 8</td><td>€ 17,130</td><td>€ 12,660</td></tr> <tr><td>Privilege Stateroom - Deck 6</td><td>€ 20,250</td><td>€ 14,840</td></tr> <tr><td>Privilege Stateroom - Deck 7</td><td>€ 21,000</td><td>€ 15,370</td></tr> <tr><td>Privilege Stateroom - Deck 8</td><td>€ 21,740</td><td>€ 15,890</td></tr> <tr><td>Prestige Suite - Deck 7</td><td>€ 27,680</td><td>€ 20,040</td></tr> <tr><td>Prestige Suite - Deck 8</td><td>€ 28,420</td><td>€ 20,560</td></tr> <tr><td>Privilege Suite</td><td>€ 29,910</td><td>€ 21,600</td></tr> <tr><td>Duplex Suite</td><td>€ 41,790</td><td>€ 29,920</td></tr> <tr><td>Owner's Suite</td><td>€ 47,730</td><td>€ 47,730</td></tr> <tr><td>Safety and port taxes (included)</td><td>€ 550</td><td></td></tr> <tr><td>Chartered flight (included)</td><td>€ 1,650</td><td></td></tr> <tr><td>Airport taxes (included)</td><td>€ 40</td><td></td></tr> </table>	Prestige Stateroom - Deck 6	€ 16,540	€ 12,250	Prestige Stateroom - Deck 7	€ 16,840	€ 12,460	Prestige Stateroom - Deck 8	€ 17,130	€ 12,660	Privilege Stateroom - Deck 6	€ 20,250	€ 14,840	Privilege Stateroom - Deck 7	€ 21,000	€ 15,370	Privilege Stateroom - Deck 8	€ 21,740	€ 15,890	Prestige Suite - Deck 7	€ 27,680	€ 20,040	Prestige Suite - Deck 8	€ 28,420	€ 20,560	Privilege Suite	€ 29,910	€ 21,600	Duplex Suite	€ 41,790	€ 29,920	Owner's Suite	€ 47,730	€ 47,730	Safety and port taxes (included)	€ 550		Chartered flight (included)	€ 1,650		Airport taxes (included)	€ 40	
Prestige Stateroom - Deck 6	€ 28,820	€ 22,290																																																																																																																																																																									
Prestige Stateroom - Deck 7	€ 29,360	€ 22,700																																																																																																																																																																									
Prestige Stateroom - Deck 8	€ 29,900	€ 23,100																																																																																																																																																																									
Privilege Stateroom - Deck 6	€ 35,570	€ 27,350																																																																																																																																																																									
Privilege Stateroom - Deck 7	€ 36,920	€ 28,370																																																																																																																																																																									
Privilege Stateroom - Deck 8	€ 38,270	€ 29,380																																																																																																																																																																									
Prestige Suite - Deck 7	€ 49,070	€ 37,480																																																																																																																																																																									
Prestige Suite - Deck 8	€ 50,420	€ 38,490																																																																																																																																																																									
Privilege Suite	€ 53,120	€ 40,520																																																																																																																																																																									
Duplex Suite	€ 74,720	€ 56,720																																																																																																																																																																									
Owner's Suite	€ 85,520	€ 85,520																																																																																																																																																																									
Safety and port taxes (included)	€ 900																																																																																																																																																																										
Chartered flight (included)	€ 1,780																																																																																																																																																																										
Airport taxes (included)	€ 40																																																																																																																																																																										
Prestige Stateroom - Deck 6	€ 18,770	€ 13,810																																																																																																																																																																									
Prestige Stateroom - Deck 7	€ 19,110	€ 14,040																																																																																																																																																																									
Prestige Stateroom - Deck 8	€ 19,450	€ 14,280																																																																																																																																																																									
Privilege Stateroom - Deck 6	€ 23,040	€ 16,790																																																																																																																																																																									
Privilege Stateroom - Deck 7	€ 23,890	€ 17,390																																																																																																																																																																									
Privilege Stateroom - Deck 8	€ 24,740	€ 17,980																																																																																																																																																																									
Prestige Suite - Deck 7	€ 31,580	€ 22,770																																																																																																																																																																									
Prestige Suite - Deck 8	€ 32,430	€ 23,370																																																																																																																																																																									
Privilege Suite	€ 34,140	€ 24,570																																																																																																																																																																									
Duplex Suite	€ 47,800	€ 34,130																																																																																																																																																																									
Owner's Suite	€ 54,630	€ 54,630																																																																																																																																																																									
Safety and port taxes (included)	€ 550																																																																																																																																																																										
Chartered flight (included)	€ 1,650																																																																																																																																																																										
Airport taxes (included)	€ 40																																																																																																																																																																										
Prestige Stateroom - Deck 6	€ 17,930	€ 13,190																																																																																																																																																																									
Prestige Stateroom - Deck 7	€ 18,250	€ 13,410																																																																																																																																																																									
Prestige Stateroom - Deck 8	€ 18,580	€ 13,640																																																																																																																																																																									
Privilege Stateroom - Deck 6	€ 22,010	€ 16,040																																																																																																																																																																									
Privilege Stateroom - Deck 7	€ 22,830	€ 16,620																																																																																																																																																																									
Privilege Stateroom - Deck 8	€ 23,640	€ 17,180																																																																																																																																																																									
Prestige Suite - Deck 7	€ 30,180	€ 21,760																																																																																																																																																																									
Prestige Suite - Deck 8	€ 30,990	€ 22,330																																																																																																																																																																									
Privilege Suite	€ 32,630	€ 23,480																																																																																																																																																																									
Duplex Suite	€ 45,690	€ 32,620																																																																																																																																																																									
Owner's Suite	€ 52,230	€ 52,230																																																																																																																																																																									
Safety and port taxes (included)	€ 550																																																																																																																																																																										
Chartered flight (included)	€ 1,550																																																																																																																																																																										
Airport taxes (included)	€ 40																																																																																																																																																																										
Prestige Stateroom - Deck 6	€ 16,540	€ 12,250																																																																																																																																																																									
Prestige Stateroom - Deck 7	€ 16,840	€ 12,460																																																																																																																																																																									
Prestige Stateroom - Deck 8	€ 17,130	€ 12,660																																																																																																																																																																									
Privilege Stateroom - Deck 6	€ 20,250	€ 14,840																																																																																																																																																																									
Privilege Stateroom - Deck 7	€ 21,000	€ 15,370																																																																																																																																																																									
Privilege Stateroom - Deck 8	€ 21,740	€ 15,890																																																																																																																																																																									
Prestige Suite - Deck 7	€ 27,680	€ 20,040																																																																																																																																																																									
Prestige Suite - Deck 8	€ 28,420	€ 20,560																																																																																																																																																																									
Privilege Suite	€ 29,910	€ 21,600																																																																																																																																																																									
Duplex Suite	€ 41,790	€ 29,920																																																																																																																																																																									
Owner's Suite	€ 47,730	€ 47,730																																																																																																																																																																									
Safety and port taxes (included)	€ 550																																																																																																																																																																										
Chartered flight (included)	€ 1,650																																																																																																																																																																										
Airport taxes (included)	€ 40																																																																																																																																																																										
<p>USHUAIA • USHUAIA on 8th January 2022; 14 nights - Expedition to Charcot & Peter I Islands</p> <p>NATIONAL GEOGRAPHIC PONANT EXPEDITIONS</p> <p>POINANT BONUS Up to -30%</p> <table border="1"> <tr><td>Prestige Stateroom - Deck 6</td><td>€ 22,300</td><td>€ 16,320</td></tr> <tr><td>Prestige Stateroom - Deck 7</td><td>€ 22,710</td><td>€ 16,610</td></tr> <tr><td>Prestige Stateroom - Deck 8</td><td>€ 23,120</td><td>€ 16,900</td></tr> <tr><td>Privilege Stateroom - Deck 6</td><td>€ 27,450</td><td>€ 19,930</td></tr> <tr><td>Privilege Stateroom - Deck 7</td><td>€ 28,480</td><td>€ 20,650</td></tr> <tr><td>Privilege Stateroom - Deck 8</td><td>€ 29,510</td><td>€ 21,370</td></tr> <tr><td>Prestige Suite - Deck 7</td><td>€ 37,750</td><td>€ 27,140</td></tr> <tr><td>Prestige Suite - Deck 8</td><td>€ 38,780</td><td>€ 27,860</td></tr> <tr><td>Privilege Suite</td><td>€ 40,850</td><td>€ 29,310</td></tr> <tr><td>Duplex Suite</td><td>€ 57,330</td><td>€ 40,840</td></tr> <tr><td>Owner's Suite</td><td>€ 65,570</td><td>€ 65,570</td></tr> <tr><td>Safety and port taxes (included)</td><td>€ 700</td><td></td></tr> <tr><td>Chartered flight (included)</td><td>€ 1,650</td><td></td></tr> <tr><td>Airport taxes (included)</td><td>€ 40</td><td></td></tr> </table>	Prestige Stateroom - Deck 6	€ 22,300	€ 16,320	Prestige Stateroom - Deck 7	€ 22,710	€ 16,610	Prestige Stateroom - Deck 8	€ 23,120	€ 16,900	Privilege Stateroom - Deck 6	€ 27,450	€ 19,930	Privilege Stateroom - Deck 7	€ 28,480	€ 20,650	Privilege Stateroom - Deck 8	€ 29,510	€ 21,370	Prestige Suite - Deck 7	€ 37,750	€ 27,140	Prestige Suite - Deck 8	€ 38,780	€ 27,860	Privilege Suite	€ 40,850	€ 29,310	Duplex Suite	€ 57,330	€ 40,840	Owner's Suite	€ 65,570	€ 65,570	Safety and port taxes (included)	€ 700		Chartered flight (included)	€ 1,650		Airport taxes (included)	€ 40		<p>USHUAIA • USHUAIA on 19th November 2021, 14th December 2021, 2nd February 2022; 14 nights Expedition to Charcot & Peter I Islands</p> <p>POINANT BONUS Up to -30%</p> <table border="1"> <tr><td>Prestige Stateroom - Deck 6</td><td>€ 19,610</td><td>€ 14,440</td></tr> <tr><td>Prestige Stateroom - Deck 7</td><td>€ 19,970</td><td>€ 14,690</td></tr> <tr><td>Prestige Stateroom - Deck 8</td><td>€ 20,330</td><td>€ 14,940</td></tr> <tr><td>Privilege Stateroom - Deck 6</td><td>€ 24,090</td><td>€ 17,570</td></tr> <tr><td>Privilege Stateroom - Deck 7</td><td>€ 24,990</td><td>€ 18,200</td></tr> <tr><td>Privilege Stateroom - Deck 8</td><td>€ 25,880</td><td>€ 18,830</td></tr> <tr><td>Prestige Suite - Deck 7</td><td>€ 33,050</td><td>€ 23,850</td></tr> <tr><td>Prestige Suite - Deck 8</td><td>€ 33,950</td><td>€ 24,480</td></tr> <tr><td>Privilege Suite</td><td>€ 35,740</td><td>€ 25,730</td></tr> <tr><td>Duplex Suite</td><td>€ 50,070</td><td>€ 35,760</td></tr> <tr><td>Owner's Suite</td><td>€ 57,240</td><td>€ 57,240</td></tr> <tr><td>Safety and port taxes (included)</td><td>€ 700</td><td></td></tr> <tr><td>Chartered flight (included)</td><td>€ 1,650</td><td></td></tr> <tr><td>Airport taxes (included)</td><td>€ 40</td><td></td></tr> </table>	Prestige Stateroom - Deck 6	€ 19,610	€ 14,440	Prestige Stateroom - Deck 7	€ 19,970	€ 14,690	Prestige Stateroom - Deck 8	€ 20,330	€ 14,940	Privilege Stateroom - Deck 6	€ 24,090	€ 17,570	Privilege Stateroom - Deck 7	€ 24,990	€ 18,200	Privilege Stateroom - Deck 8	€ 25,880	€ 18,830	Prestige Suite - Deck 7	€ 33,050	€ 23,850	Prestige Suite - Deck 8	€ 33,950	€ 24,480	Privilege Suite	€ 35,740	€ 25,730	Duplex Suite	€ 50,070	€ 35,760	Owner's Suite	€ 57,240	€ 57,240	Safety and port taxes (included)	€ 700		Chartered flight (included)	€ 1,650		Airport taxes (included)	€ 40		<p>USHUAIA • USHUAIA on 16th February 2022; 24 nights The Ross Sea</p> <p>POINANT BONUS Up to -30%</p> <table border="1"> <tr><td>Prestige Stateroom - Deck 6</td><td>€ 35,290</td><td>€ 25,570</td></tr> <tr><td>Prestige Stateroom - Deck 7</td><td>€ 35,960</td><td>€ 26,030</td></tr> <tr><td>Prestige Stateroom - Deck 8</td><td>€ 36,630</td><td>€ 26,500</td></tr> <tr><td>Privilege Stateroom - Deck 6</td><td>€ 43,690</td><td>€ 31,450</td></tr> <tr><td>Privilege Stateroom - Deck 7</td><td>€ 45,370</td><td>€ 32,620</td></tr> <tr><td>Privilege Stateroom - Deck 8</td><td>€ 47,050</td><td>€ 33,800</td></tr> <tr><td>Prestige Suite - Deck 7</td><td>€ 60,490</td><td>€ 43,210</td></tr> <tr><td>Prestige Suite - Deck 8</td><td>€ 62,170</td><td>€ 44,380</td></tr> <tr><td>Privilege Suite</td><td>€ 65,530</td><td>€ 46,730</td></tr> <tr><td>Duplex Suite</td><td>€ 92,410</td><td>€ 65,550</td></tr> <tr><td>Owner's Suite</td><td>€ 105,850</td><td>€ 105,850</td></tr> <tr><td>Safety and port taxes (included)</td><td>€ 1,200</td><td></td></tr> <tr><td>Chartered flight (included)</td><td>€ 1,650</td><td></td></tr> <tr><td>Airport taxes (included)</td><td>€ 40</td><td></td></tr> </table>	Prestige Stateroom - Deck 6	€ 35,290	€ 25,570	Prestige Stateroom - Deck 7	€ 35,960	€ 26,030	Prestige Stateroom - Deck 8	€ 36,630	€ 26,500	Privilege Stateroom - Deck 6	€ 43,690	€ 31,450	Privilege Stateroom - Deck 7	€ 45,370	€ 32,620	Privilege Stateroom - Deck 8	€ 47,050	€ 33,800	Prestige Suite - Deck 7	€ 60,490	€ 43,210	Prestige Suite - Deck 8	€ 62,170	€ 44,380	Privilege Suite	€ 65,530	€ 46,730	Duplex Suite	€ 92,410	€ 65,550	Owner's Suite	€ 105,850	€ 105,850	Safety and port taxes (included)	€ 1,200		Chartered flight (included)	€ 1,650		Airport taxes (included)	€ 40		<p>USHUAIA • MONTEVIDEO on 5th April 2022; 17 nights The Weddell Sea & the South Sandwich Islands</p> <p>POINANT BONUS Up to -30%</p> <table border="1"> <tr><td>Prestige Stateroom - Deck 6</td><td>€ 22,890</td><td>€ 16,610</td></tr> <tr><td>Prestige Stateroom - Deck 7</td><td>€ 23,330</td><td>€ 16,920</td></tr> <tr><td>Prestige Stateroom - Deck 8</td><td>€ 23,760</td><td>€ 17,220</td></tr> <tr><td>Privilege Stateroom - Deck 6</td><td>€ 28,330</td><td>€ 20,420</td></tr> <tr><td>Privilege Stateroom - Deck 7</td><td>€ 29,420</td><td>€ 21,180</td></tr> <tr><td>Privilege Stateroom - Deck 8</td><td>€ 30,510</td><td>€ 21,950</td></tr> <tr><td>Prestige Suite - Deck 7</td><td>€ 39,210</td><td>€ 28,040</td></tr> <tr><td>Prestige Suite - Deck 8</td><td>€ 40,300</td><td>€ 28,800</td></tr> <tr><td>Privilege Suite</td><td>€ 42,470</td><td>€ 30,320</td></tr> <tr><td>Duplex Suite</td><td>€ 59,880</td><td>€ 42,510</td></tr> <tr><td>Owner's Suite</td><td>€ 68,590</td><td>€ 68,590</td></tr> <tr><td>Safety and port taxes (included)</td><td>€ 850</td><td></td></tr> <tr><td>Chartered flight (included)</td><td>€ 1,110</td><td></td></tr> <tr><td>Airport taxes (included)</td><td>€ 20</td><td></td></tr> </table>	Prestige Stateroom - Deck 6	€ 22,890	€ 16,610	Prestige Stateroom - Deck 7	€ 23,330	€ 16,920	Prestige Stateroom - Deck 8	€ 23,760	€ 17,220	Privilege Stateroom - Deck 6	€ 28,330	€ 20,420	Privilege Stateroom - Deck 7	€ 29,420	€ 21,180	Privilege Stateroom - Deck 8	€ 30,510	€ 21,950	Prestige Suite - Deck 7	€ 39,210	€ 28,040	Prestige Suite - Deck 8	€ 40,300	€ 28,800	Privilege Suite	€ 42,470	€ 30,320	Duplex Suite	€ 59,880	€ 42,510	Owner's Suite	€ 68,590	€ 68,590	Safety and port taxes (included)	€ 850		Chartered flight (included)	€ 1,110		Airport taxes (included)	€ 20	
Prestige Stateroom - Deck 6	€ 22,300	€ 16,320																																																																																																																																																																									
Prestige Stateroom - Deck 7	€ 22,710	€ 16,610																																																																																																																																																																									
Prestige Stateroom - Deck 8	€ 23,120	€ 16,900																																																																																																																																																																									
Privilege Stateroom - Deck 6	€ 27,450	€ 19,930																																																																																																																																																																									
Privilege Stateroom - Deck 7	€ 28,480	€ 20,650																																																																																																																																																																									
Privilege Stateroom - Deck 8	€ 29,510	€ 21,370																																																																																																																																																																									
Prestige Suite - Deck 7	€ 37,750	€ 27,140																																																																																																																																																																									
Prestige Suite - Deck 8	€ 38,780	€ 27,860																																																																																																																																																																									
Privilege Suite	€ 40,850	€ 29,310																																																																																																																																																																									
Duplex Suite	€ 57,330	€ 40,840																																																																																																																																																																									
Owner's Suite	€ 65,570	€ 65,570																																																																																																																																																																									
Safety and port taxes (included)	€ 700																																																																																																																																																																										
Chartered flight (included)	€ 1,650																																																																																																																																																																										
Airport taxes (included)	€ 40																																																																																																																																																																										
Prestige Stateroom - Deck 6	€ 19,610	€ 14,440																																																																																																																																																																									
Prestige Stateroom - Deck 7	€ 19,970	€ 14,690																																																																																																																																																																									
Prestige Stateroom - Deck 8	€ 20,330	€ 14,940																																																																																																																																																																									
Privilege Stateroom - Deck 6	€ 24,090	€ 17,570																																																																																																																																																																									
Privilege Stateroom - Deck 7	€ 24,990	€ 18,200																																																																																																																																																																									
Privilege Stateroom - Deck 8	€ 25,880	€ 18,830																																																																																																																																																																									
Prestige Suite - Deck 7	€ 33,050	€ 23,850																																																																																																																																																																									
Prestige Suite - Deck 8	€ 33,950	€ 24,480																																																																																																																																																																									
Privilege Suite	€ 35,740	€ 25,730																																																																																																																																																																									
Duplex Suite	€ 50,070	€ 35,760																																																																																																																																																																									
Owner's Suite	€ 57,240	€ 57,240																																																																																																																																																																									
Safety and port taxes (included)	€ 700																																																																																																																																																																										
Chartered flight (included)	€ 1,650																																																																																																																																																																										
Airport taxes (included)	€ 40																																																																																																																																																																										
Prestige Stateroom - Deck 6	€ 35,290	€ 25,570																																																																																																																																																																									
Prestige Stateroom - Deck 7	€ 35,960	€ 26,030																																																																																																																																																																									
Prestige Stateroom - Deck 8	€ 36,630	€ 26,500																																																																																																																																																																									
Privilege Stateroom - Deck 6	€ 43,690	€ 31,450																																																																																																																																																																									
Privilege Stateroom - Deck 7	€ 45,370	€ 32,620																																																																																																																																																																									
Privilege Stateroom - Deck 8	€ 47,050	€ 33,800																																																																																																																																																																									
Prestige Suite - Deck 7	€ 60,490	€ 43,210																																																																																																																																																																									
Prestige Suite - Deck 8	€ 62,170	€ 44,380																																																																																																																																																																									
Privilege Suite	€ 65,530	€ 46,730																																																																																																																																																																									
Duplex Suite	€ 92,410	€ 65,550																																																																																																																																																																									
Owner's Suite	€ 105,850	€ 105,850																																																																																																																																																																									
Safety and port taxes (included)	€ 1,200																																																																																																																																																																										
Chartered flight (included)	€ 1,650																																																																																																																																																																										
Airport taxes (included)	€ 40																																																																																																																																																																										
Prestige Stateroom - Deck 6	€ 22,890	€ 16,610																																																																																																																																																																									
Prestige Stateroom - Deck 7	€ 23,330	€ 16,920																																																																																																																																																																									
Prestige Stateroom - Deck 8	€ 23,760	€ 17,220																																																																																																																																																																									
Privilege Stateroom - Deck 6	€ 28,330	€ 20,420																																																																																																																																																																									
Privilege Stateroom - Deck 7	€ 29,420	€ 21,180																																																																																																																																																																									
Privilege Stateroom - Deck 8	€ 30,510	€ 21,950																																																																																																																																																																									
Prestige Suite - Deck 7	€ 39,210	€ 28,040																																																																																																																																																																									
Prestige Suite - Deck 8	€ 40,300	€ 28,800																																																																																																																																																																									
Privilege Suite	€ 42,470	€ 30,320																																																																																																																																																																									
Duplex Suite	€ 59,880	€ 42,510																																																																																																																																																																									
Owner's Suite	€ 68,590	€ 68,590																																																																																																																																																																									
Safety and port taxes (included)	€ 850																																																																																																																																																																										
Chartered flight (included)	€ 1,110																																																																																																																																																																										
Airport taxes (included)	€ 20																																																																																																																																																																										

Price List - 2021 Arctic departures

The rates of our cruises are per person, based on a double occupancy and including taxes.

For single occupancy rates, please contact us.

For details, please refer to the General and Particular Terms and Conditions of Sales, see pages 61 to 66.

LONGYEARBYEN • REYKJAVIK
on 24th July 2021; 15 nights
The Geographic North Pole

POINANT BONUS
Up to -15%

Prestige Stateroom - Deck 6	€ 29,640	€ 25,420
Prestige Stateroom - Deck 7	€ 30,210	€ 25,900
Prestige Stateroom - Deck 8	€ 30,790	€ 26,390
Privilege Stateroom - Deck 6	€ 36,850	€ 31,540
Privilege Stateroom - Deck 7	€ 38,300	€ 32,780
Privilege Stateroom - Deck 8	€ 39,740	€ 34,000
Prestige Suite - Deck 7	€ 51,290	€ 43,820
Prestige Suite - Deck 8	€ 52,740	€ 45,050
Privilege Suite	€ 55,620	€ 47,500
Duplex Suite	€ 78,720	€ 67,130
Owner's Suite	€ 90,270	€ 90,270
Safety and port taxes (included)	€ 750	
Chartered flight (included)	€ 720	
Airport taxes (included)	€ 40	

REYKJAVIK • LONGYEARBYEN
on 8th August 2021; 15 nights
The Geographic North Pole

POINANT BONUS
Up to -15%

Prestige Stateroom - Deck 6	€ 29,640	€ 25,420
Prestige Stateroom - Deck 7	€ 30,210	€ 25,900
Prestige Stateroom - Deck 8	€ 30,790	€ 26,390
Privilege Stateroom - Deck 6	€ 36,850	€ 31,540
Privilege Stateroom - Deck 7	€ 38,300	€ 32,780
Privilege Stateroom - Deck 8	€ 39,740	€ 34,000
Prestige Suite - Deck 7	€ 51,290	€ 43,820
Prestige Suite - Deck 8	€ 52,740	€ 45,050
Privilege Suite	€ 55,620	€ 47,500
Duplex Suite	€ 78,720	€ 67,130
Owner's Suite	€ 90,270	€ 90,270
Safety and port taxes (included)	€ 750	
Chartered flight (included)	€ 720	
Airport taxes (included)	€ 40	

LONGYEARBYEN • REYKJAVIK
on 23rd August 2021; 15 nights
The Geographic North Pole

POINANT BONUS
Up to -20%

Prestige Stateroom - Deck 6	€ 29,640	€ 24,010
Prestige Stateroom - Deck 7	€ 30,210	€ 24,470
Prestige Stateroom - Deck 8	€ 30,790	€ 24,930
Privilege Stateroom - Deck 6	€ 36,850	€ 29,780
Privilege Stateroom - Deck 7	€ 38,300	€ 30,940
Privilege Stateroom - Deck 8	€ 39,740	€ 32,090
Prestige Suite - Deck 7	€ 51,290	€ 41,330
Prestige Suite - Deck 8	€ 52,740	€ 42,490
Privilege Suite	€ 55,620	€ 44,790
Duplex Suite	€ 78,720	€ 63,270
Owner's Suite	€ 90,270	€ 90,270
Safety and port taxes (included)	€ 750	
Chartered flight (included)	€ 720	
Airport taxes (included)	€ 40	

LE HAVRE • REYKJAVIK
on 31st May 2021; 14 nights
In the Wake of Captain
Jean-Baptiste Charcot

POINANT BONUS
Up to -25%

Prestige Stateroom - Deck 6	€ 21,000	€ 15,920
Prestige Stateroom - Deck 7	€ 21,420	€ 16,240
Prestige Stateroom - Deck 8	€ 21,840	€ 16,550
Privilege Stateroom - Deck 6	€ 26,250	€ 19,860
Privilege Stateroom - Deck 7	€ 27,300	€ 20,650
Privilege Stateroom - Deck 8	€ 28,350	€ 21,430
Prestige Suite - Deck 7	€ 36,750	€ 27,730
Prestige Suite - Deck 8	€ 37,800	€ 28,520
Privilege Suite	€ 39,900	€ 30,100
Duplex Suite	€ 56,700	€ 42,700
Owner's Suite	€ 65,100	€ 65,100
Safety and port taxes (included)	€ 700	

REYKJAVIK • REYKJAVIK
on 14th June 2021; 10 nights
At the Genesis of the
French Polar Expeditions

POINANT BONUS
Up to -25%

Prestige Stateroom - Deck 6	€ 14,250	€ 10,810
Prestige Stateroom - Deck 7	€ 14,540	€ 11,030
Prestige Stateroom - Deck 8	€ 14,820	€ 11,240
Privilege Stateroom - Deck 6	€ 17,810	€ 13,480
Privilege Stateroom - Deck 7	€ 18,530	€ 14,020
Privilege Stateroom - Deck 8	€ 19,240	€ 14,550
Prestige Suite - Deck 7	€ 24,940	€ 18,830
Prestige Suite - Deck 8	€ 25,650	€ 19,360
Privilege Suite	€ 27,080	€ 20,430
Duplex Suite	€ 38,480	€ 28,980
Owner's Suite	€ 44,180	€ 44,180
Safety and port taxes (included)	€ 500	

REYKJAVIK • REYKJAVIK
on 24th June 2021; 12 nights
Discovering the Northeast
Greenland National Park

NATIONAL GEOGRAPHIC | **POINANT EXPEDITIONS**
POINANT BONUS
Up to -25%

Prestige Stateroom - Deck 6	€ 20,610	€ 15,600
Prestige Stateroom - Deck 7	€ 21,020	€ 15,910
Prestige Stateroom - Deck 8	€ 21,430	€ 16,220
Privilege Stateroom - Deck 6	€ 25,760	€ 19,470
Privilege Stateroom - Deck 7	€ 26,790	€ 20,240
Privilege Stateroom - Deck 8	€ 27,820	€ 21,010
Prestige Suite - Deck 7	€ 36,070	€ 27,200
Prestige Suite - Deck 8	€ 37,100	€ 27,970
Privilege Suite	€ 39,160	€ 29,520
Duplex Suite	€ 55,650	€ 41,880
Owner's Suite	€ 63,890	€ 63,890
Safety and port taxes (included)	€ 600	

REYKJAVIK • NOME
on 7th September 2021; 24 nights
The Northwest Passage

POINANT BONUS
Up to -10%

Prestige Stateroom - Deck 6	€ 34,610	€ 31,370
Prestige Stateroom - Deck 7	€ 35,280	€ 31,970
Prestige Stateroom - Deck 8	€ 35,950	€ 32,570
Privilege Stateroom - Deck 6	€ 43,010	€ 38,930
Privilege Stateroom - Deck 7	€ 44,690	€ 40,440
Privilege Stateroom - Deck 8	€ 46,370	€ 41,950
Prestige Suite - Deck 7	€ 59,810	€ 54,050
Prestige Suite - Deck 8	€ 61,490	€ 55,560
Privilege Suite	€ 64,850	€ 58,580
Duplex Suite	€ 91,730	€ 82,770
Owner's Suite	€ 105,170	€ 105,170
Safety and port taxes (included)	€ 1,200	
Chartered flight (included)	€ 950	
Airport taxes (included)	€ 60	

Formalities

FOR ALL CRUISES

The information below is current but subject to change at any time without advance notice from government authorities. Please consult your respective government agencies for visa and health information.

Passport valid for at least six (6) months beyond the completion of your trip. Passport must contain at least two completely clear, blank, unused visa pages for each visa required, not including any amendment pages. Visa pages with stains or ink from other pages in the passport are not usable. Guests who deviate from the scheduled embarkation or disembarkation port should research the foreign entry requirements for the port country. Due to government regulations, regrettably, PONANT will have to deny boarding to any guest who fails to obtain the appropriate travel documentation for this trip.

SPECIFIC FORMALITIES

THE ARCTIC

REYKJAVIK • NOME – 7th SEPTEMBER 2021 ⁽¹⁾ ⁽²⁾

- (1) **USA:** Depending on your nationality, an ESTA (available on <https://esta.cbp.dhs.gov/esta>) or Visa may be required. Please contact the USA consulate website for details. A copy of your visa or ESTA must be sent to PONANT at the very latest 45 days prior to your cruise date. In case the ESTA is sufficient to enter the USA, we also ask you to keep a copy of your ESTA with your passport throughout the duration of your trip.
- (2) **Canada:** Travel by sea - The eTA is not required for US, Australian and British citizens. Other nationalities: a visa may be required, please contact Canada consulate website for details. <http://www.canada.ca/en/index.html>.

IMPORTANT INFORMATION

Visas: Before departure, please check carefully that your visas are valid for the right date and time spent in the countries in order to avoid unpleasant situations.

Warning about the use of drones: The use of drones aboard PONANT ships, whether they are sailing at sea, at a port of call or anchored, is strictly forbidden. The use of drones on land in the Arctic and Antarctic regions is also strictly forbidden by international polar regulations. In other regions, it may be possible to use drones on land if permission has been obtained from the relevant authorities of each country and each region travelled through, as well as a pilot's licence that should be obtained from your home country. Passengers are responsible for obtaining these permits; they should be able to present them at all times. Passengers who do not obtain these authorisations expose themselves to the risk of legal proceeding.

Medication: If you have a medical treatment, do not forget your prescription.

Polar expedition cruises:

- Complimentary polar parka: a PONANT polar water-resistant parka is offered (adult sizes only - in case of consecutive cruises, only one parka per person). When packing your suitcases, we recommend you follow clothing instructions and advice provided with your travel documents. Do not hesitate to contact us if in doubt.
- Complimentary boots hire: Boot rental will be offered onboard (for adults only) on Expedition cruises where the logo "Free Boot Rental" appears. Book your boots up to 7 days prior to departure, on our dedicated website <https://boutique.ponant.com/>, **boots section**. You will find them on board after embarkation. For more information, please contact us.
- Diving: the required level for guests wishing to dive in polar regions is PADI Advanced Open Water or CMAS 2 stars with a dry suit qualification. You also need to demonstrate with your dive log at least 50 dives in cold water, including 20 dives with a dry suit. You will need to provide a certificate of non-

indication against the practice of diving. There is no decompression chamber in the polar regions, and diving can be risky. Keep in mind that medical facilities may be several hours, or several days away.

- Travelling to polar/isolated regions is an exhilarating experience in remote areas: please remember that you are far from modern hospitals with full medical facilities, thus evacuation is extremely expensive. Without adequate medical coverage, all expenses will have to be immediately paid with your personal funds. We urge you to subscribe to full coverage insurance, choose your insurance company very carefully, be extremely vigilant and ensure your insurance is fully comprehensive, especially if you are insured by your credit card. PONANT offers an insurance contract with extensive guarantees, please contact us for more information.

In addition, it is mandatory to return the medical questionnaire, provided at time of booking, between 90 and 45 days departure. This questionnaire is very important in order to respect mandatory safety rules in polar zones. Any false information on this questionnaire may lead prior departure to a refusal of your embarkation at the port of departure, without any possible recourse.

- Ports of call, visited sites, outings and landings will depend on weather conditions, position of ice, winds and the state of the sea. These can force a change of plans at any time. The Captain and the Expedition Leader may at any time cancel or stop any activity, or even modify the itinerary. The final itinerary will be confirmed by the Captain, who will take into account the touristic quality of the sites and above all, the safety of the passengers. His decision will be based on advice from experts and authorities. Expedition programmes include activities such as Zodiac® outings and landings (sometimes with "wet landing"), moderate walks to more active hikes, all accompanied by your expedition team of naturalist guides.

- By choosing an expedition cruise, passengers agree to follow the rules of good conduct presented by the expedition team during the cruise.

General terms and conditions of sale

Important notice

These General Terms and Conditions of Sale (General Ts&Cs) are an integral part of the Contract between CDP and the Traveller. The Special Terms and Conditions of Sale (Special Ts&Cs) – which are specific to each Cruise season (summer or winter) or to the MS *Paul Gauguin* ship may take precedence over these Terms and Conditions of Sale. In any case, the provisions on the Cruise Ticket and the Passage Ticket take precedence over the General Terms and Conditions and Special Terms and Conditions of Sale. This set of contractual documents constitutes the Contract between CDP and the Traveller. If any provision in these General Terms and Conditions of Sale and/or the Contract runs contrary to a mandatory legal provision, and/or is deemed invalid, such invalidity shall not affect the validity of the other clauses.

In accordance with Regulation (EU) 2016/679 of the European Parliament and of the Council of 27 April 2016 on the protection of personal data, the Traveller has the right to access, correct, delete, port, contest and limit data processing, and to not be subject to an automatic individual decision, including profiling, for nominative information about them that Compagnie du Ponant, as the Data Controller, may notably collect for business purposes and to provide services. To find out more about or exercise their personal data rights, the Traveller can contact the Data Protection Officer (vieprivée@ponant.com) or see the Compagnie du Ponant Personal Data Protection Policy at www.ponant.com.

1. Definitions

- 1.1 **“Tickets”**: Means either Transport Tickets, Cruise Tickets and/or Airline Tickets.
- 1.2 **“Airline Ticket”**: Document containing the terms of the air transport contract under which the Air Carrier undertakes to carry the Traveller between the airports mentioned.
- 1.3 **“Cruise Ticket”**: Document containing the terms of the cruise contract under which the Cruise Organiser undertakes to have the Traveller carried by the Maritime Carrier and provide them with the services mentioned on the Cruise Ticket. The Cruise Ticket issued to the Traveller is governed by the general terms of the Cruise Ticket.
- 1.4 **“Passage Ticket”**: Document containing the terms of the passage contract under which the Maritime Carrier undertakes to carry the Traveller between the ports mentioned. The Passage Ticket issued to the Traveller is governed by the general terms of the Passage Ticket.
- 1.5 **“CDP”**: Compagnie du Ponant, a simplified joint-stock company headquartered at 408, avenue du Prado 13008 MARSEILLE, France with capital of €3,644,607, registered in the MARSEILLE Trade and Companies Register under number 344 497 011, State Licence no.013.06.0005, member of the S.N.A.V. and registered with ATOUT France under number IMO13120040. Its financial security is provided by APST, 15 avenue Carnot, 75017 Paris, France. Compagnie du Ponant is insured with Generali Assurance IARD – 7 boulevard Haussmann – 75456 PARIS Cedex 09, France, under Professional Indemnity contract no.AA714708.
- 1.6 **“Conclusion of the Contract”**: Means the moment when the Contract begins between the Traveller(s) and CDP, that is, when the latter confirms the Traveller reservation.
- 1.7 **“General Terms and Conditions of Sale” or “General Ts&Cs”**: The provisions of this document.
- 1.8 **“Special Terms and Conditions of Sale” or “Special Ts&Cs”**: Contract terms that apply to the Contract and are specific to each Cruise season: summer or winter.
- 1.9 **“Contract”**: All the respective obligations of CDP and the Traveller as set out on the invoice and Tickets, as well as in the General Ts&Cs and Special Ts&Cs.
- 1.10 **“Cruise”**: Maritime tour as described in the Sales Brochure and/or on the CDP website and on the Cruise Ticket.
- 1.11 **“Expedition Cruise”**: Cruise during which exploratory outings in an inflatable dinghy are planned and naturalist guides are present.
- 1.12 **“Pre-Sale Excursion/Extension”**: Services including Transfers, visits and services on land before, during and/or after the Cruise.
- 1.13 **“Package”**: means the combination of a Cruise and a flight, and/or a Transfer, and/or Pre and Post-Cruise Services, and/or Pre-Sale Excursions/Extensions, and/or any other tourist service booked at the Conclusion of the Contract. This does not include excursions on land that have not been booked at the same time as the Cruise

itself, or services offered on board the ship.

- 1.14 **“Cruise Organiser”**: Natural person or company that undertakes to have Travellers carried by the Maritime Carrier and provide them with the services mentioned on the Cruise Ticket, and whose header appears on the Cruise Ticket.
- 1.15 **“Disabled Person” or “Person With Reduced Mobility”**: Any person who is limited in their activities or restricted in their participation in the agreed Services due to a substantial deterioration of one or more physical, sensory, mental, cognitive or psychological functions, to multiple disabilities or to a disabling health problem.
- 1.16 **“Service”**: Means any Cruise, Package, flight, Transfer, Pre- or Post-Cruise Service, Pre-Sale Excursion/Extension and any tourist service booked at the Conclusion of the Contract.
- 1.17 **“Price”**: Total cost of Services reserved by the Traveller.
- 1.18 **“Pre- and Post-Cruise Services”**: Services including Transfers, visits and services on land before, and/or after the Cruise, as mentioned in the Contract.
- 1.19 **“Transfer”**: Operation involving transporting Travellers between the embarkation port and/or the disembarkation port and a meeting point set by CDP (airport, hotel, train station, etc.).
- 1.20 **“Maritime Carrier”**: Natural person or company that operates the ship carrying Travellers, and whose header appears on the Passage Ticket.
- 1.21 **“Air Carrier”**: Company that undertakes to carry Travellers by air and whose header appears on the Airline Ticket.
- 1.22 **“Seller”**: Natural or legal person who has sold the Services included in the Contract direct to Travellers.
- 1.23 **“Travellers”**: Any person named at the time of booking/the Conclusion of the Contract and appearing on the invoice and/or on the Tickets issued by CDP or by the Seller.

2. Acceptance and application of the general terms and conditions

2.1 The Conclusion of the Contract constitutes the Traveller's unreserved acceptance of all these General Ts&Cs and Special Ts&Cs, as well as the clauses and terms of the Passage Ticket and Cruise Ticket.

3. Applicable text

- 3.1 Where CDP acts as Maritime Carrier, the contractual relations between CDP and the Traveller are governed by the Passage Ticket and by the provisions of the French Transport Code, particularly Articles L 5420-1 to L 5421-12, by the implementing Decree of 31 December 1966 and the provisions of the London International Convention of 19 November 1976, and where appropriate, those of Regulation 392/2009 of the European Parliament and of the Council of 23 April 2009, which are an integral part of the Passage Ticket.
- 3.2 Where CDP is the Cruise Organiser, the contractual relations between CDP and the Traveller are governed by the Contract, which includes the Cruise Ticket, as well as by Articles 47 to 49 of French Law no.66-420 of 18 June 1966 on maritime affreightment and carriage contracts and its implementing decree of 31 December 1966.
- 3.3 Where CDP is the Seller of a tourist package within the meaning of Article L.211-2 of the French Tourism Code, the contractual relations between CDP and the Traveller are governed by the Contract and by Articles L.211-1 and following of the Tourism Code.

4. Payment of the price

- 4.1 The Conclusion of the Contract entails paying a deposit equivalent to 25% of the Price of this Service, with the balance to be paid no later than 60 working days before the start of the initial Service in the Contract.
- 4.2 By way of derogation from Article 4.1, for Expedition Cruises, the balance must be paid no later than 90 days before the start of the initial Service in the Contract.
- 4.3 After the Service has been fully paid for, the Traveller will receive the Ticket(s) and, where applicable, the vouchers and insurance contract, if these have been purchased direct from CDP.

5. Prices and discounts per person and per cruise

- 5.1 **The reference pricing** for the cruise applies while the latter is available for purchase and is per person and based on double cabin occupancy.

5.2 **The PONANT BONUS price** is the best price you can access on the day of booking. It can save you up to 30% on the cruise reference price (port-to-port price only, excluding port and security taxes, excluding air fare, excluding any land-based services). In response to changing cruise availability, the percentage discount may reduce and the PONANT BONUS price increase. The PONANT BONUS price does not apply to the MS *Paul Gauguin*.

5.3 **Single Supplement**. The single supplement applies to any person in a single cabin. It applies to the port-port element (excluding port taxes) of the current PONANT BONUS price. This supplement may vary depending on how full a particular cruise is. It may therefore change for certain categories of cabins and/or suites only, or for any cruise at any time without notice. There is no single supplement on selected cruises for certain cabin categories. This selection is updated according to how full a particular cruise is and can be checked online at www.ponant.com.

5.4 Depending on how full the ship is (excluding the LE PONANT yacht and the MS *Paul Gauguin*) at the time of booking, a **“guaranteed” cabin** in the Deluxe Deck 3 category may be offered. This means the booking is made in the Deluxe Deck 3 category, but no cabin number is assigned. Cabins will be allocated at the discretion of the Company and may change at any time until embarkation. Once a cabin number has been assigned, no change request can be accepted. The advantage of this approach is that passengers can enjoy superior-category accommodation without paying a surcharge. In any case, the minimum category chosen when booking is guaranteed.

5.5 Other discounts

These offers cannot be combined with any other type of reduction or special offer. If you qualify for several discounts, the amount for the second discount is calculated using the price obtained after taking off the first discount, and so on.

5.5.1 **Consecutive cruises**: on all our cruises, enjoy 10% off a consecutive cruise; on a selection of cruises (list can be viewed any time at www.ponant.com), enjoy 20% off the cruise in second position, 30% off the cruise in third position and 40% off the cruise in fourth position (offers cannot be combined). These discounts apply to the port-port cruise price only, excluding port taxes.

5.5.2 Ponant Yacht Club Members

Commodore: 12.5% off the port-port cruise price only, excluding port and security taxes.

Grand Admiral: 10% off the port-port cruise price only, excluding port and security taxes.

Admiral: 7.5% off the port-port cruise price only, excluding port and security taxes.

Major: 5% off the port-port cruise price only, excluding port and security taxes.

5.5.3 Honeymoon Offer:

If you go on a cruise in the 12 months after your wedding or civil partnership celebration, you can enjoy the following benefits (except on the MS *Paul Gauguin*):

- 5% off the port-port cruise price only, excluding port and security taxes,
- Bottle of champagne on arrival,
- Photo shoot with five couple's photos included (all ships except Le Ponant),
- Two free spa treatments (maximum value: €120 per treatment) (all ships except Le Ponant),
- On-board surprises.

On the MS *Paul Gauguin*, you can enjoy a traditional Polynesian blessing, as well as a bottle of champagne in your cabin. Offer valid on presentation of proof of eligibility. Offer cannot be used together with any other reduction.

5.5.4 Wedding Anniversaries

Every multiple of five years after your wedding or civil partnership (5, 10, 15, 20, etc.) you can enjoy a €200 discount per cabin/suite for a cruise during the anniversary year. Offer valid on presentation of proof of eligibility. Discount can be applied once per anniversary year. This offer is not valid on the MS *Paul Gauguin*.

5.5.5 Family & Friends

• Where a reservation includes at least five paying passengers, the entire party receives a 5% discount on the same port-to-port cruise (excluding port taxes). This offer is not valid on the MS *Paul Gauguin*.

• Special discounts for children aged 3 to 17 sharing a cabin with one or two adults.

5.5.6 **Referral scheme**: When you refer someone, you will enjoy a €500 discount per cabin on your next cruise (when the person you refer books) and they will receive a €500

discount on their first cruise (these discounts do not apply on the MS *Paul Gauguin*). If the person you have referred cancels, your reduction will no longer apply but you can use the offer again whenever the person makes a new reservation. The discount for the person referring and for the person referred may not give rise to a payment or refund in cash. The discount for the person referred applies immediately and is limited to one use per cabin and per person referred. The reduction for the person referring is valid on their next cruise after the person referred has booked. The discount for the person referring must be used all at once. The person referring should share their Ponant Yacht Club number, or enough information to be identified, with the people being referred. In the absence of precise enough identification, the referral scheme cannot proceed. The person referring must have already sailed with PONANT. The person referred should not have already sailed on a PONANT ship. Neither party should be or have been part of the PONANT crew, or worked for a travel agency. Although an unlimited number of people can be referred, there can only be one person referred per household, and the person referring and the person referred should not be part of the same household. The person referring and the person referred cannot share a cabin; neither can two people be referred. The referral scheme cannot proceed if the person referred or another member of their household has already been referred. Other PONANT benefits, such as the Ponant Bonus, can be combined with the referral offer.

5.5.7 On-board bookings: 5% off the port-port cruise price only (excluding port and security taxes) for each new cruise booked with our on-board staff.

Except for the Single Privilege Offer and the Ponant Bonus, the offers described above cannot be used together.

6. Passports, visas and vaccination certificates

6.1 Before the Conclusion of the Contract, it is the responsibility of each Traveller with French nationality to comply as appropriate with the administrative and/or health formalities required by the countries involved in the Services, notably those communicated by CDP and accessible on the www.ponant.com website and in the brochure.

6.2 Before the Conclusion of the Contract, Travellers of other nationalities should find out from competent embassies and/or consulates the administrative and/or health formalities they need to comply with because these are required by the countries involved in the Services.

6.3 CDP will in no event be liable for the consequences of the Traveller not complying with police, customs or health formalities before or during the Services period. Any Traveller who is unable to board a flight or the ship due to not showing the required documents cannot claim any refund or compensation.

6.4 In any case, it is recommended that Travellers check all information with the relevant authorities before the date of departure. CDP advises Travellers to read their government's latest travel advice online for the destinations chosen. In France, the website is <http://www.diplomatie.gouv.fr/fr/conseils-aux-voyageurs> and the telephone number is +33 (0)1 43 17 53 53 (French Ministry of Foreign Affairs). CDP would like to alert Travellers to the fact that the information given can change right up until the departure date, so should be checked until departure. CDP would ask Travellers to adjust their behaviour to the destination; to be vigilant and avoid carrying valuable items when travelling abroad.

6.5 Traveller passports will be checked against national and international criminal databases, including those of Interpol.

7. Embarkation and maritime carriage conditions

• General rules

7.1 The Traveller must report for embarkation in line with the terms set out in the Passage Ticket and at least two hours before the ship's scheduled departure time. The Passage Ticket and/or Cruise Ticket issued by CDP are only valid for the Cruise and ship mentioned on the ticket.

7.2 The purpose of the Passage Ticket is to transport Travellers and their luggage from embarkation at the departure port to disembarkation at the destination.

7.3 All Travellers must have a valid passport, or identity card if appropriate, valid for six months after their return date, as well as visas and vaccination certificates as these may be required at the ship's ports of call and arrival. Every Traveller is personally responsible for complying with legal and regulatory requirements before departure. The Carrier, Cruise Organiser and/or CDP and/or Captain can deny embarkation or disembarkation to any Travellers without the correct documents authorising them to disembark at the scheduled arrival point and ports of call.

7.4 If a Traveller who has booked a port-port Cruise organises their own air or land transport to the embarkation point and/or from the disembarkation point back to their home, it is strongly recommended that they buy tickets that can be amended and refunded, and allow sensible train station/airport/port transfer time. If there are delays, cancellations or changes, CDP will not cover transport or Transfer costs, or any other type of service outside the Cruise Ticket provisions and not bought direct from CDP. CDP is not responsible for any incidents or accidents involving property or persons that arise en route to/from the ship.

7.4.1 For sea voyages: to make sure you are ready for embarkation on the day of departure, we would encourage you to spend the previous night in the departure city. Similarly, with regards to disembarkation, we would also strongly suggest booking a flight the day after arrival. These often-long sea voyages are more affected by weather conditions, including wind and currents, than any other type of trip. This may mean bringing sailing times forward and/or delaying the ship's arrival.

7.5 Each Traveller guarantees that they are fit to travel by sea and that their health and conduct will not harm other Travellers or the smooth running of the Services agreed and/or offered. If a Traveller's health is likely to limit their ability to carry out the Services agreed, or may disrupt them, they must warn CDP and provide a medical certificate on request to prove their fitness. Any known health problems must be reported in writing at the Conclusion of the Contract, or at the latest before the ship's departure (or before the Services begin) to the CDP medical service.

7.6 Medical consultations, care and medication on land and on board the ship are the responsibility of the Traveller. All Travellers must ensure that they have appropriate medical insurance coverage.

7.7 If there is an epidemic risk, the Carrier, Cruise Organiser, CDP, ship Captain or any local health authority can require Travellers to complete a health questionnaire and, where appropriate, a screening test before or on embarking or disembarking, including during stopovers.

7.8 For Expedition Cruise programmes, where, as stated, medical facilities are several days' sailing away, a compulsory full medical questionnaire (provided at the Conclusion of the Contract) must be filled in by the Traveller's General Practitioner between 90 and 45 days before the start of the Service. This document must be returned by post or email to the CDP medical department (qm@medical.ponant.com) no later than 40 days before the Services begin. Medical certificates dated before this period will not be valid. Self-certification is not permitted. Any Traveller who does not return their completed compulsory medical certificate will be denied embarkation and will not receive any refund.

7.9 Travellers must behave in a disciplined way throughout the trip. Travellers must attend any safety demonstration or explanation organised on board and follow crew instructions at all times.

7.10 The Carrier, Cruise Organiser, CDP and/or ship Captain may, if they deem it necessary, terminate the contract and refuse to carry any Traveller not complying with the entry requirements for destination port countries, or whose presence on board could negatively impact the comfort, health or safety of other Travellers, the crew, or be counter to the laws and regulations of ports visited by the ship, or who could make the Carrier, Cruise Organiser and/or CDP responsible for their protection or repatriation. For these reasons, the Cruise Organiser, Carrier and/or CDP and/or the ship Captain may decide to take the following appropriate measures: 1) Forbid the Traveller(s) from embarking or disembarking at any port visited by the ship; 2) Make the Traveller(s) disembark at any port visited by the ship; 3) Transfer the Traveller(s) to another ship; 4) Confine the Traveller(s) on board in their cabin or the medical service cabin; 5) Have the doctor or their team administer any drug, medicine or other substance permitted and/or confine the Traveller to a hospital or a similar institution at the destination ports if the on board doctor deems it necessary.

• Disabled Persons and Persons With Reduced Mobility

7.11 For safety reasons, every Traveller must be independent or travel with someone who can provide all the assistance they need during the Services period.

7.12 Travellers with limited mobility due to a physical disability or a condition requiring special treatment and/or specific assistance, including wheelchair users, must warn CDP in writing when requesting a booking or when the Traveller becomes aware of their disability if it takes effect after booking, but in any case at least 30 days before the Service starts so that CDP is able to confirm that the Traveller can physically undertake the Cruise on board the ship and/or the Services agreed.

7.13 The Cruise Organiser, Carrier and/or CDP and/or Captain reserve the right to deny access to Travellers who have not informed CDP or the Seller of a disability or a need for assistance where the latter are not compatible with safety rules and regulations in the sailing area, or would require care that CDP and/or the Carrier cannot provide, or if the design of the passenger ship, infrastructure and port equipment, including port terminals, would make embarkation, disembarkation and transporting the person concerned in satisfactorily safe conditions impossible.

7.14 Going ashore can be difficult or impossible for Travellers With Reduced Mobility or Disabled Travellers, particularly when disembarking on a launch and/or going out on a zodiac.

7.15 Travellers using a wheelchair, having gained CDP's written agreement, must embark with their own wheelchair and be accompanied by someone who can assist them at any time. In any case, every disembarkation is subject to the Captain's approval.

7.16 LE BORÉAL, L'AUSTRAL, LE SOLÉAL, LE LYRIAL and LE COMMANDANT-CHARCOT each have three cabins specially equipped for Disabled Persons or Persons With Reduced Mobility (two cabins for PONANT EXPLORERS ships; one cabin for the MS *Paul Gauguin*). Please note that because of its different design, the LE PONANT yacht does not allow access for Persons With Reduced Mobility or Disabled Persons.

• Children and pregnant women

7.17 Children aged under three are not permitted on board the ships, except the MS *Paul Gauguin* which children can board from the age of 12 months. Children aged under six are not allowed to board ships for Polar Expedition Cruises.

7.18 For all Expedition Cruises, children must be totally independent during external activities organised and when disembarking by inflatable dinghy, be big enough to sit on craft rubber sides, and understand and respond immediately to orders given by responsible persons. Therefore, children may only participate in inflatable dinghy activities with the approval of the Captain and Expedition Leader depending on the sea conditions and the difficulty of disembarkation at each site visited.

7.19 While on board/on excursions, children who are minors remain the full and total responsibility of their parents or carers.

7.20 PONANT reserves the right to limit the number of children aged under eight on its ships.

7.21 Because ships do not have baby delivery facilities on board, women who are over six months pregnant are not permitted to embark. In any case, it is recommended that pregnant women hoping to travel on a ship consult a doctor before departure to ensure that their health is compatible with the proposed cruise.

7.22 On the MS *Paul Gauguin*, all children aged under 18 must be accompanied by an adult aged over 21. If the person accompanying is not the child's parent, a "Parental Consent" form must be sent to PONANT.

• Permitted baggage

7.21 Every Traveller must correctly and clearly label each piece of luggage with their full name, the ship name, their destination and their cabin number. This information must be written in visible and indelible characters.

7.22 Any merchandise, goods or items whose content could threaten the health and integrity of other Travellers and their baggage, or people and goods; could damage or pollute the ship; materials that are flammable, explosive, corrosive, dangerous, odorous or prone to leaking; items that may not be imported or do not comply with customs or police regulations; and in general, goods and items other than those for the Traveller's personal use are forbidden on board and in luggage (hereinafter "Prohibited Items"). The Traveller will in any case be responsible for any injury, loss or damage suffered as a result of Prohibited Items being in their luggage or cabin, and will have to hold the Cruise Organiser, Carrier and/or CDP harmless against any legal action that may be brought against them due to these Prohibited Items being found on board or during embarkation or disembarkation. These Prohibited Items can, at any time and in any location, be unloaded, destroyed, thrown into the sea or made harmless by the Cruise Organiser, Carrier, crew and/or CDP without compensation and regardless of whether the Traveller pays for any destruction costs.

7.23 The Traveller must monitor their baggage and personal belongings throughout the Service period, including time spent on board and during embarkation, transfer and disembarkation. The Cruise Organiser, Carrier and/or CDP disclaim all liability

for luggage left unmonitored by the Traveller and for which the latter has not taken all the necessary precautions to avoid theft, loss or damage. The Cruise Organiser, Carrier and/or CDP will not be held responsible for fragile items, jewellery, watches, money, cash, computers and other electronic equipment, mobile phones or any other precious item that the Traveller does not declare as valuable and hand in on the ship with a description and approximate value for each, and for which the Traveller has not paid the corresponding proportional cloakroom fee.

7.24 The Traveller has civil and criminal responsibility for any damage they cause directly or indirectly to the Cruise Organiser, Carrier and/or CDP, to other Travellers or to third parties. They are solely liable for any fines or penalties imposed as a result by competent authorities.

7.25 The Traveller agrees — immediately when requested to do so — to provide the Cruise Organiser, Carrier, crew officers and/or CDP with full access to their cabin, luggage and personal belongings. This also applies to customs, health and/or administrative authorities in stopover countries or the flag state.

7.26 The Cruise Organiser, Carrier and/or CDP are not liable for any damage to photographic, telephone or electronic equipment, or for cameras lost or damaged while the Services are being provided, whether on board the ship or its dinghies or during embarkation or disembarkation, or for any damage to objects that fall in the water.

• Animals

7.27 Animals, including service and medical assistance animals, are forbidden on board ships and may not embark.

• Smoking policies

7.28 Ships are non-smoking except in designated areas on outside decks (also applies to electronic cigarettes).

8. Air transport

8.1 All Airline Tickets are issued as electronic tickets. The first and last names shown must be identical to those listed on the valid Traveller passports. Any error or change request will mean a new Airline Ticket must be bought.

8.2 In accordance with French Decree no.2007-669 of 2 May 2007 regarding the obligation to inform Travellers of Air Carrier identity, CDP will inform the Traveller when they book of the identity of the Air Carrier(s) known at that time to be likely to provide air transport. Should this change after the Conclusion of the Contract, CDP undertakes to communicate any changes to the identity of the Air Carrier(s) as soon as it becomes aware of them before departure.

8.3 Airlines can have code-share agreements whereby two or more share the same flight, with one being the named airline and the other operating the flight with its own aeroplane.

8.4 "Direct flight" means no aircraft changes, but does not preclude the possibility of one or several stops. "Non-stop direct flight" means no aircraft changes and no stops.

8.5 The schedules and transport types mentioned by CDP are those provided by the Air Carriers. Therefore, they are indicative until departure and subject to amendment for a variety of reasons (additional stops, atmospheric conditions, air traffic permissions, strikes, etc.). In accordance with the Warsaw and Montreal Conventions, flight schedules and routes, and departure airports and destination airports are never contractual elements of the Travel Ticket and as a result CDP cannot be held responsible for these changes beyond its control.

8.6 Any technical, climatic or political incident, delay, cancellation or strike, additional stop, change of aeroplane, change of route, etc. that arises while air transport is being provided cannot be blamed on CDP and cannot give rise to compensation for any reason. If the Traveller wishes to forfeit the benefit of a Service, they will be liable for the cancellation charges shown below.

8.7 The Air Carrier's liability is limited in the case of damages, complaints or claims of any kind in accordance with the Airline Ticket terms. CDP will not reimburse any expenses (taxis, meals, hotels, etc.) once the Traveller becomes the Air Carrier's responsibility. The consequences of accidents/incidents that may occur during air transport are governed by the Warsaw and Montreal Conventions, or by local regulations governing national transport in the country concerned.

8.8 On scheduled international flights, depending on the Air Carrier, the general baggage allowance (excluding benefits for loyalty programme members) is strictly

limited to 23 kg maximum in the hold and 8 kg maximum per Traveller in the cabin. On scheduled domestic flights, the allowance is generally between 15 and 20 kg maximum in the hold. On flights chartered by CDP, the hold baggage allowance is 23 kg (subject to confirmation by the Air Carrier selected) and 5 kg maximum per piece of cabin baggage. Travellers should pack carefully with these restrictions in mind. Air Carriers will not hesitate to bill for excess baggage and sometimes refuse to check in overly heavy or bulky luggage for stringent security reasons. CDP and the Air Carrier cannot be held responsible if a Traveller is denied check-in due to their baggage being too heavy.

9. Assignment of the Contract

9.1 In accordance with Article R.211-7 of the French Tourism Code, and only where this code applies to CDP, the Traveller can transfer their Contract to a third party who fulfils the same conditions as they do for all Services, as long as the latter have not yet begun.

9.2 The transferor and transferee must inform CDP of this decision by any means that allows for acknowledgement of receipt (registered letter, email, fax, etc.) no later than 10 working days before the start of the Services. After this, charges may apply.

9.3 Should the Traveller transfer their Contract without informing CDP in line with the process set out above, this assignment will not be valid and the Services covered in the Contract will be cancelled without any refund.

10. Contract cancellation and amendments by the Traveller

10.1 Under Article L.121-21 of the French Consumer Code, Travellers should note that they do not have the right to withdraw from the Contract set out in Article L.121-17 of the Consumer Code.

10.2 Unless otherwise agreed with CDP, the Traveller cannot amend the Services described in the Contract.

10.3 If the Traveller wishes to amend or cancel part or all of the Services described in the Contract, they must inform CDP by any means that allows for acknowledgement of receipt (fax, email, registered letter, etc.) as soon as circumstances change such that this amendment or cancellation is required. The document dispatch date will be taken as the invoice date for the change and/or cancellation fees.

Cruise amendment requests are only admissible when sent to Compagnie du Ponant using the means described above no later than 90 days before the cruise departure date. For Expedition Cruise programmes, this deadline is 150 days before departure. After this, change requests will be treated as cancellation requests and therefore covered by paragraph 10.5 governing cancellation fees.

The terms for amendment exclusively offer the opportunity for the traveller to replace one port-to-port cruise with another port-to-port cruise, with Compagnie du Ponant.

10.4 Change fees:

Where there is a change to a tourist package of higher value, and subject to complying with the terms set out in points 10.4.a to 10.4.d, no change fees will apply to the cruise service; for other services (e.g. airline services) change fees will correspond to the costs already incurred by Compagnie du Ponant:

- **10.4.a:** The passenger can amend their cruise as long as they replace it with a cruise at a higher price than the cruise replaced
- **10.4.b:** The departure date of the replacement cruise must be within a maximum of 12 months of the change request date
- **10.4.c:** Reservation and payment for the replacement cruise deposit must be carried out at the time the change request is submitted
- **10.4.d:** The replacement cruise then becomes non-exchangeable and non-refundable; only one cancellation can be made by the passenger

Where the Contract is amended to a Service with a lower value than the initial one, change fees apply and are the same as those stated in the cancellation terms set out in Article 10.5 below. The percentage fee is worked out according to the difference in price between the initial Service and the new Service.

Specifics of change requests for Ponant Yacht Club Grand Admirals:

For a first change to a tourist package: no fee will apply to the cruise service as long as the request is made no later than 90 days before the cruise departure date, or 150 days for Expedition Cruise programmes. The new departure date must be within the 12 months following the original one. Only one fee-free amendment may be made per calendar year and per person with Grand Admiral status, no matter the cruise concerned.

After a first cruise amendment, any change request will be subject to the general terms and conditions of sale that apply by default. For other services (e.g. airline services), change fees will correspond to the costs already incurred by Compagnie du Ponant.

10.5 Cancellation fees:

For Expedition Cruises:

- From the date booking is confirmed to 365 days before the start of the Cruise: €250 per passenger for the cruise service only,
- From 364 to 91 days before the start of the Cruise: 25% of the total Service amount,
- From 90 to 76 days before the start of the Cruise: 50% of the total Service amount,
- From 75 to 61 days before the start of the Cruise: 75% of the total Service amount,
- Under 61 days before the start of the Cruise: 100% of the total Service amount.

For other cruise programmes (except MS Paul Gauguin):

- From the date booking is confirmed to 365 days before the start of the Cruise: €250 per passenger for the cruise service only,
- From 364 to 91 days before the start of the Cruise: 10% of the total Service amount,
- From 90 to 61 days before the start of the Cruise: 25% of the total Service amount,
- From 60 to 46 days before the start of the Cruise: 50% of the total Service amount,
- From 45 to 31 days before the start of the Cruise: 75% of the total Service amount,
- Under 30 days before the start of the Cruise: 100% of the total Service amount.

For cruises on board MS Paul Gauguin:

- From the date booking is confirmed to 121 days before the start of the Cruise: €250 per passenger for the cruise service only,
- From 120 to 91 days before the start of the Cruise: 10% of the total Service amount,
- From 90 to 61 days before the start of the Cruise: 20% of the total Service amount,
- From 60 to 31 days before the start of the Cruise: 50% of the total Service amount,
- Under 30 days before the start of the Cruise: 100% of the total Service amount.

For other Services:

No refund will be given for cancelling or forfeiting an air- or land-based Service included in the contract, or any service forming part of the Cruise, no matter the reason.

10.6 Should a Traveller be absent due to force majeure or to their death, the Contract is terminated when notice is given by the Traveller or their assignee before the Contract begins. A quarter of the Contract price is then due to CDP. The same terms apply, on their request, to family members of the Traveller prevented from travelling by force majeure or death who were travelling with them.

10.7 Travellers who do not arrive for the departure of a Service, or who find it impossible to make the departure or forfeit it for any reason whatsoever (including due to a transport delay) are not entitled to any refund.

10.8 Once the Services have begun, Travellers are obliged to pay the full Contract price, whatever the reason that has led them to forfeit the Services.

11. Contract cancellation, suspension and amendments by CDP

11.1 Arrival and departure times are indicative and not final. CDP, as Cruise Organiser and/or Carrier and/or Package Seller cannot guarantee that timings will coincide with transport connections (plane, train, etc.).

11.2 CDP may allocate Travellers cabins other than those initially planned.

11.3 CDP reserves the right to suspend a Cruise, or to change the itinerary, for any reason it deems valid and cannot be held liable for any loss or damages in this case.

11.4 In cases of unfavourable weather conditions, or due to the political or social situation in a stopover country, or for any other reason that could compromise the safety of Travellers, goods or the ship, or in light of orders imposed by public authorities, the Cruise Organiser and/or the Carrier and/or CDP reserves the right to change the itinerary, ports of call or destination port, to delay or terminate the trip, to divert the ship, to tow or be towed, or to transfer Travellers and their luggage to another transport method, even if this means the programme being extended or shortened.

11.5 The ship may provide assistance to any person or property at sea in any situation and cannot be held responsible for the consequences of changes to the Cruise programme for this reason.

11.6 Where CDP is required, for reasons outside its control, to change the Cruise after Travellers have boarded, the latter cannot claim any compensation from either CDP or the Carrier or the Cruise Organiser other than a refund for Services not performed and not replaced or for the Ticket share not used less all costs incurred. However, CDP can claim from Travellers the extra costs of further services provided to Travellers due to a trip being extended.

11.7 In the case of external events outside the control of the Cruise Organiser and/or the Carrier and/or CDP, or for any reason pertaining to Traveller or ship safety, or due to a lack of participants, CDP can cancel the Cruise and must inform Travellers and/or where appropriate the Cruise Organiser by registered letter with acknowledgment of receipt, or by email, or via a press release.

11.8 Cruises and other CDP Services are subject to a minimum number of participants. 11.8.1 CDP reserves the right to cancel a cruise up to 21 days before departure if the number of Travellers registered is below or equal to 50% of the ship's "Passenger Capacity" (200 Passengers for Expedition Cruise programmes and 244 for other Cruises on board L'AUSTRAL, LE BORÉAL, LE LYRIAL and LE SOLÉAL; 55 for the LE PONANT yacht; 172 Passengers for PONANT EXPLORERS ships; 270 Passengers for LE COMMANDANT-CHARCOT; 332 for the MS *Paul Gauguin*).

11.8.2 CDP reserves the right to cancel any service other than the cruise if the number of Passenger participants is below 20 (unless otherwise stated).

11.9 Where CDP is the Cruise Organiser, and no matter the reason for cancellation, no compensation is due to the Traveller, who will be able to choose between the following solutions:

(i) A full refund of the Contract price; (ii) Another Service at the same price; (iii) A Service at a lower price and a refund for the price difference between the two Services based on the advertised prices. Travellers must inform CDP of their choice as soon as possible and in any event before the deadline mentioned in the cancellation documents.

11.10 Transport included in the Services is booked by CDP in line with the terms and conditions of each service provider. CDP reserves the right to substitute one form of transport for another, or one hotel for another in the same category. In the latter case, if the hotel is in a lower category, Travellers will be refunded for the overpayment.

11.11 All services are offered subject to availability. If there are no more spaces in the class offered, CDP can provide extra places for a surcharge, depending on availability.

12. Responsibility

12.1 When acting as Maritime Carrier, CDP is responsible for any damage to Travellers in line with the compensation provisions and limitations in the following texts, according to their respective fields of application: Articles L5421-1 to L5421-8 of the French Transport Code and Regulation (EC) no.392/2009 of the European Parliament and of the Council of 23 April 2009. Where this regulation applies, the compensation limits for the Carrier in cases of death or bodily injury are 400,000 special drawing rights per Traveller and per event.

12.2 When acting as Maritime Carrier, CDP is responsible for any damage to baggage in line with the compensation provisions and limitations in the following texts, according to their respective fields of application: Articles L5421-9 to L5421-12 of the French Transport Code, French Decree no.67-268 of 23 March 1967 amended by Decree no.86-1065 of 24 September 1986 and Regulation (EC) no.392/2009 of the European Parliament and of the Council of 23 April 2009. Where this regulation applies, the maximum compensation for the Carrier to provide for baggage loss or damage is 2,250 special drawing rights per passenger and per carriage, with an allowance of 149 special drawing rights per Traveller applied in all cases. Where Regulation (EC) no.392/2009 does not apply, the maximum compensation for the Carrier to provide for baggage loss or damage is 1,520 euros per Traveller and per carriage.

12.3 When acting as Maritime Carrier, CDP is always subject to the compensation limitations stated in the London International Convention of 19 November 1976 as amended by the Protocol of 1996, and these limits take precedence over any other limit indicated by a non-mandatory text.

12.4 For any bodily injury or material damage sustained on board the ship or its dinghies or crafts during embarkation or disembarkation, or occurring during sea transport, CDP, when acting as Cruise Organiser, is responsible within the same limits and terms as the Carrier. Where this injury or damage occurs outside these circumstances, but between the beginning and end of the cruise, any compensation due to the Traveller from the Cruise Organiser and/or CDP is capped at half the price of the Cruise.

12.5 When acting as travel package seller within the meaning of the French Tourism

Code, CDP is responsible for damage to Travellers or their baggage within the limits and terms set out in Article L.211-16 of the code. CDP cannot be held responsible for the consequences of the following events:

a) Loss or theft of Tickets, failure to present identity and/or health documents, or presenting expired documents, or those with an insufficient period of validity (identity cards, passports, visas, vaccination certificates, etc.) or not matching the information in the documents issued to the Traveller.

b) Incidents or events that are unforeseeable and insurmountable involving a third party outside the travel contract (force majeure). When cancellation is necessary due to force majeure circumstances and/or for Traveller safety reasons and/or where required by an administrative authority, whether French or foreign.

12.6 CDP, as Cruise Organiser, Carrier and/or Package Seller is expressly not responsible for immaterial damages, loss of enjoyment and punitive or assimilated damages.

12.7 Where a Traveller is not permitted to board a ship – including after or during a stopover – in the circumstances mentioned in Article 6, neither CDP as Cruise Organiser, Carrier and/or Package Seller, nor the ship Captain or crew are responsible in any way whatsoever.

12.8 CDP is in no way responsible for bodily injury, or material or non-material damages caused by war, blockades, riots, strikes, social conflicts, acts of piracy or terrorism, epidemics or quarantines, disasters and natural catastrophes, nuclear fusion, fission, pollution or explosions or their consequences, the closure of departure, stopover or destination ports, the detention, requisition or seizure of the ship for any reason, the use of the ship for special State needs, or by the simple threat of the above events. It is also not responsible for damages caused by a Traveller voluntarily participating in a brawl or dangerous activity not required to save a human life.

12.9 CDP is in no way responsible for damages caused by suspending and/or amending a trip due to force majeure, war, blockades, riots, strikes, social conflicts, acts of piracy or terrorism, epidemics or quarantines, disasters and natural catastrophes, nuclear fusion, fission, pollution or explosions or their consequences, the closure of departure, stopover or destination ports, the detention, requisition or seizure of the ship for any reason, the use of the ship for special State needs, or by the simple threat of the above events.

12.10 Where CDP as Cruise Organiser and/or Carrier and/or Package Seller is responsible for transporting luggage in the period before or after the ship lands, it acts as the Traveller's authorised representative and its responsibility is not substituted for that of the carriers tasked with transporting the baggage.

12.11 Luggage not claimed on the arrival of the ship or of any other transport method stays in port at the Traveller's expense and risk.

12.12 Any delay to baggage delivery that is detrimental to the Traveller will only give rise to compensation not exceeding 20% of the amount that would be due if luggage left in the hold were lost under the terms of Article 12.2. CDP has 3 (three) months to search for lost luggage.

12.13 Except where specific written contractual agreement has been provided to the contrary, land and air transport, Transfers, watersports activities and scuba diving from the ship, services included in the Pre- and Post-Cruise Services, Excursions/Extensions, excursions on land including, where relevant, hotel and restaurant bookings and guided tours, even when reserved on the ship or through CDP and invoiced by the latter, are provided by independent third-party contractors who are not representatives or employees of the Cruise Organiser, Carrier, Package Seller and/or CDP. Travellers use these services at their own risk and CDP, as Cruise Organiser, Carrier and/or Package Seller, acts only as an intermediary and does not assume any responsibility for these services, including cases of bodily injury or material damage, cancellation, delays or programme changes.

12.14 For Expedition Cruises, all Travellers taking part in external activities agree to participate in good conscience and only at their own risk. Each person is responsible for their own physical fitness, safety, behaviour and comfort. Travellers must attend on-board information briefings. CDP, its directors, administrators, officers, crew members and expedition team members, and activity leaders, cannot be held responsible for any loss or damage sustained while participating in external activities offered during Expedition Cruises.

13. Price adjustment

13.1 The prices quoted by CDP are based on economic conditions on the publication date. These economic data include, among other things, the cost of transport and fuel,

charges and taxes relating to the services offered (fees to enter and/or leave countries visited, airport or port taxes, embarkation or disembarkation taxes, visa fees, tourist site entrance fees), exchange rates used when compiling programme prices. CDP expressly reserves the right to adjust prices. Any change to the costs of transport, fuel, tax, charges, euro or dollar exchange rates or special drawing rights and visa fees will be fully reflected in trip prices by incorporating agent commission where required. Where the French Tourism Code applies, CDP can also lower the Price by applying Article L.211-12, on the understanding that in this case no price change can occur under 30 working days before the scheduled departure date.

13.2 Where the French Tourism Code applies, the Traveller will be notified of price rises by registered letter with acknowledgment of receipt – or by any other means that allows for acknowledgement of receipt – with a notice period of 30 (thirty) days before departure. Having been alerted, the Passenger and/or Ticket buyer can terminate their contract and obtain an immediate refund of the amount already paid penalty-free by contacting the Seller in writing within 7 (seven) days of being notified of the Price increase.

For cruise services only, the potential daily surcharge (S) will be calculated as follows:

$$S = [(variation \text{ in MDO}^* \text{ price} \times \text{MDO daily consumption}^{**}) / \text{Ship capacity}^{***}] \times \text{MDO cruising time} + [(variation \text{ in LNG}^* \text{ price} \times \text{LNG}^{**} \text{ daily consumption} + variation \text{ in MDO}^* \text{ price} \times \text{MDO}^{**} \text{ daily consumption} / k^{**}) / \text{Ship capacity}^{***}] \times \text{LNG cruising time}$$

(*): MDO: Gasoil 0.1 FOB Rotterdam barge in \$US

LNG Northern Hemisphere cruises: TTF + \$2.5/MMBtu converted into tonnes with LNG heat of combustion = 46 MJ/kg, where \$2.5/MMBtu corresponds to the cost of usage and bunkering at the LNG terminal in the Rotterdam area.

LNG Southern Hemisphere cruises: Henry Hub + \$7/MMBtu converted into tonnes with LNG heat of combustion = 46 MJ/kg, where \$7/MMBtu corresponds to the costs of relay to the liquefaction site + cost of liquefaction + cost of delivery + cost of usage and bunkering.

(**): L'AUSTRAL, LE BORÉAL, LE SOLÉAL and LE LYRIAL: 20t; LE PONANT: 5.5t; PONANT EXPLORERS ships: 15t; LE COMMANDANT-CHARCOT: LNG 36t; MDO 43t; k = 72.

(***): L'AUSTRAL, LE BORÉAL, LE SOLÉAL and LE LYRIAL: 200 for Expedition Cruises and 244 for other programmes; LE PONANT: 55; PONANT EXPLORERS ships: 172; LE COMMANDANT-CHARCOT: 270 in the Northern Hemisphere and 200 in the Southern Hemisphere; MS PAUL GAUGUIN: 332.

14. Travel insurance

14.1 The sale of Services by CDP does not include any kind of insurance.

14.2 CDP asks that every Traveller has full and adequate travel insurance covering the risks of cancellation, assistance being required, repatriation, damages to and loss of baggage, and medical expenses. Proof of this insurance must be sent to CDP before departure.

The Traveller is solely responsible for taking out such insurance at their own expense. CDP offers insurance covering these risks that can be taken out and paid for in full at the Conclusion of the Contract. Please contact us for more information. If the Traveller has not taken out such insurance, they accept responsibility and any costs linked to medical expenses, evacuation for health reasons, or repatriation. For some specific cruises, CDP can ask Travellers who do not provide proof of insurance to sign a waiver.

15. After-sales

15.1 Any comment or claim relating to a trip or stay must be sent by registered letter with acknowledgment of receipt detailing precisely how the event unfolded and the alleged harm, either to Compagnie du Ponant - 408 Avenue du Prado 13008 MARSEILLE, FRANCE if the Traveller concluded their Contract direct with CDP, or to the travel agency that sold the Services. This must be done within one month of the return date or the right to do so will be lost. CDP encourages passengers to fill in satisfaction surveys distributed on board the ship at the end of the Cruise.

15.2 Having contacted the after-sales service mentioned in Article 15.1, and if a satisfactory response is not received within 60 days, the Traveller can contact the French Travel and Tourism Ombudsman, details for which are available at www.mtv.travel.

15.3 Any legal action by a Traveller against CDP as Cruise Organiser and/or Carrier must

be brought within a certain period after the date the Traveller disembarked or should have disembarked: 1 (one) year for material damage and 2 (two) years for bodily injury, otherwise the right to claim will be forfeited.

15.4 Any legal action against CDP as Package Seller must be brought within the time periods set out in Articles 2224 and 2226 of the French Civil Code.

16. Applicable Law and Jurisdiction

16.1 This Contract is governed by French law.

16.2 Only courts within the jurisdiction of the Tribunal de Grande Instance de Marseille, France, are competent to hear any case against CDP, its employees, subsidiaries, or subcontractors, even with the introduction of third parties.

17. Extract from the French Tourism Code

The information contained in the paper brochures and on the CDP website constitutes the prior information provided to the Traveller and mentioned in Article L.211-9 of the French Tourism Code. However, in line with Article R.211-5 of the Tourism Code, Compagnie du Ponant expressly reserves the right to amend certain elements before the conclusion of the Contract. Extract from the French Tourism Code establishing the rules for operations relating to the organisation and sale of journeys or stays:

Article R.211-3:

Subject to the exclusions set out in the third and fourth paragraph of Article L.211-7, any offer and sale of travel services or stays will give rise to the delivery of appropriate documents meeting the requirements set out in this section. In the case of sale of air tickets or transport tickets on scheduled routes excluding the services related thereto, the seller shall deliver to the buyer one or several tickets for the entire trip issued by the carrier, or under its responsibility. In the case of transport on demand, the name and address of the carrier on whose behalf the tickets are issued must be mentioned. Separately invoicing the various elements of the same tourist package price does not relieve the seller of their obligations under the regulatory provisions of this section.

Article R.211-3-1:

The exchange of pre-contractual information or the provision of contractual conditions shall be done in writing. This may be electronically under the terms of validity and conditions set out in sections 1369-1 to 1369-11 of the French Civil Code. The name or business name and address of the seller and its registration in the register provided for in point a of Article L.141-3 or, where applicable, the name, address and registration of the federation or union mentioned in the second paragraph of Article R.211-2 are mentioned.

Article R.211-4:

Prior to the conclusion of the contract, the seller must provide the customer with information on prices, dates and other components of the services provided during the journey or stay, such as:

- 1) The destination, means, characteristics and categories of transport used;
- 2) Type of accommodation, location, level of comfort and main features, its approval and its tourist classification corresponding to the regulations or customs of the host country;
- 3) Meals provided;
- 4) Description of the itinerary when it is a tour;
- 5) The administrative and health formalities to be completed by nationals of another EU member State or a State party to the European Economic Area agreement, notably as regards crossing borders and completion times;
- 6) Visits, excursions and other services included in the package or available at extra cost;
- 7) The smallest or largest size of the group required for the trip or stay to take place, as well as, if the trip or stay is subject to a minimum number of participants, the deadline set for informing the customer in the event of the cancellation of the trip or stay. This deadline cannot be less than twenty one days before departure;
- 8) The amount or percentage of the price to be paid as a deposit on the conclusion of the contract and the schedule for payment of the balance;
- 9) The methods of price adjustment as set out in the contract pursuant to Article R.211-8;
- 10) The terms and conditions for cancellation of a contractual nature;
- 11) Cancellation conditions set out in Articles R.211-9, R.211-10 and R.211-11;
- 12) Information on the optional purchase of an insurance contract covering the consequences of certain cases of cancellation, or an assistance contract covering certain specific risks, including repatriation costs in the case of accident or illness;

13) When the contract includes air transport, information for each flight leg, under Articles R.211-15 to R.211-18.

Article R.211-5:

Prior information provided to the customer binds the seller, unless the seller has expressly reserved the right to amend certain elements within it. In such a case, the seller must clearly indicate to what extent these changes may occur and to what elements.

In any event, the changes made to the prior information must be communicated to the customer in writing before the conclusion of the contract.

Article R.211-6:

The contract between the seller and buyer must be in writing, in two copies, signed by both parties, and one of which should be given to the buyer. When the contract is concluded electronically, it is concluded pursuant to Articles 1369-1 to 1369-11 of the French Civil Code. The contract must include the following clauses:

- 1) The name and address of the seller, their guarantor and their insurer, as well as the name and address of the organiser;
- 2) The travel destination(s) and, where there are multiple destinations, the relevant periods, with dates;
- 3) The means, characteristics and categories of transport to be used; the dates, times and points of departure and return;
- 4) The type of accommodation, location, level of comfort and main features, and its tourist classification corresponding to the regulations or customs of the host country;
- 5) The meals provided;
- 6) The itinerary when it is a tour;
- 7) The visits, excursions or other services included in the total price of the trip or stay;
- 8) The total price of services invoiced and an indication of any adjustment to this billing under the provisions of Article R.211-8;
- 9) An indication, where applicable, of charges or taxes relating to certain services such as landing, disembarkation or embarkation fees at ports and airports and tourist taxes if these are not included in the price of the service(s) provided;
- 10) The timing and terms of payment; the final payment made by the buyer cannot be for less than 30% of the price of the trip or stay and must be made when documents for the trip or stay are issued;
- 11) Any particular terms and conditions requested by the buyer and agreed to by the seller;
- 12) The way in which the buyer can submit to the seller a complaint for non-performance, or poor performance of the contract. Any complaint must be sent as soon as possible by any means that allows for acknowledgement of receipt (fax, email, registered letter, etc.) and, where applicable, notified in writing to the trip organiser and to the provider of services concerned;
- 13) The deadline for informing the buyer in the event of a trip or stay being cancelled by the seller, if the trip or stay is subject to a minimum number of participants in accordance with the provisions of point 7 in Article R.211-4;
- 14) The terms and conditions for cancellation of a contractual nature;
- 15) Cancellation conditions set out in Articles R.211-9, R.211-10 and R.211-11;
- 16) Details about the risks covered and the amount of coverage under the insurance contract covering the consequences of the seller's professional liability;
- 17) Details about the insurance contract covering the consequences of certain types of cancellation taken out by the buyer (policy number and insurer's name), as well as details about the assistance contract covering certain particular risks, including the cost of repatriation in the case of accident or sickness. In this case, the seller must provide the buyer with a document specifying at least the risks covered and excluded;
- 18) The deadline for informing the seller in the event of contract assignment by the buyer;
- 19) Commitment to provide the buyer, at least ten days before the scheduled date of departure, with the following information:
 - a) The name, address and telephone number of the seller's local representative or, in the absence thereof, the names, addresses and telephone numbers of the local entities that may assist the customer in the event of difficulty or, in the absence thereof, the telephone number enabling the seller to be reached in the event of an emergency;
 - b) For foreign trips and stays by minors, a telephone number and an address for direct contact with the child, or the person on-site locally responsible for the trip;
- 20) The clause providing for cancellation and refund without penalties of sums paid by the buyer in case of non-compliance with the information obligation in point 13 of

Article R.211-4.

21) The commitment to provide the buyer, in good time before the start of the trip or stay, with times of departure and arrival.

Article R.211-7:

The buyer can transfer the contract to a transferee who fulfils the same conditions as they do for the trip or stay, as long as the contract has not yet had any effect. Unless more favourably stipulated to the transferor, they are obliged to inform the seller of their decision by any means that allows for acknowledgement of receipt (fax, email, registered letter, etc.) no later than seven days before the start of the trip. In the case of a cruise, this period is extended to fifteen days. Assignment is not subject in any case to any prior authorisation by the seller.

Article R.211-8:

When the contract contains an express right to amend prices within the limits provided for in Article L.211-12, it must indicate the specific terms for calculating price changes, whether up or down, including the amount for related transportation costs and taxes, the currency or currencies that may affect the price of the trip or stay, the portion of the price to which the variation applies, and the exchange rate for the currency or currencies used as a reference when setting the price shown in the contract.

Article R.211-9:

When, before the buyer's departure, the seller is forced to make a change to one of the essential elements of the contract such as a significant price increase, and when it disregards the obligation to inform referred to in point 13 of Article R.211-4, the buyer may, without prejudice to claiming compensation for any damages suffered, and after being informed of this by the seller using any means that allows for acknowledgement of receipt (fax, email, registered letter, etc.):

- Either cancel the contract and obtain immediate reimbursement of the sums paid;
- Or accept the modification or replacement trip offered by the seller; an amendment to the contract specifying the changes made is then signed by the parties; any decrease in price will be deducted from any amounts still due from the buyer and if the payment already made by the latter exceeds the price of the amended service, the overpayment must be returned to them before the date of departure.

Article R.211-10:

In the event specified in Article L.211-14, when, before the buyer departs, the seller cancels the trip or stay, it must inform the buyer by any means that allows for acknowledgement of receipt (fax, email, registered letter, etc.); the buyer, without prejudice to claiming compensation for any damages suffered, shall obtain from the seller immediate reimbursement without penalty of the sums paid; in such event, the buyer shall receive an indemnity at least equal to the penalty they would have borne if cancellation were a result of their own action on that date.

The provisions of this Article do not in any way represent an obstacle to the conclusion of an amicable agreement, the purpose of which is acceptance by the buyer of a replacement trip or stay as proposed by the seller.

Article R.211-11:

Where, after the buyer's departure, the seller is unable to provide a major portion of the services under the contract, representing a significant percentage of the price paid by the buyer, the seller must immediately make the following provisions without prejudice to claiming compensation for any damages suffered:

- Either propose services to replace those specified, by possibly bearing any additional charge and, if the services accepted by the buyer are of a lower quality, the seller must reimburse them for the price difference upon their return;
- Or, if unable to propose replacement services or if these are refused by the buyer, provide transport tickets, without additional charge, to ensure their return, under terms and conditions that may be considered equivalent, to the departure location, or to another location agreed between the two parties. The provisions of this Article shall apply in case of non-compliance with the obligation under point 13 of Article R.211-4.

Article R.211-12

The provisions of Articles R. 211-3 to R. 211-11 must be reproduced in the brochures and on the travel contracts of those mentioned in Article L. 211-1.

Article R.211-13

The buyer can no longer claim the benefit of the clause set out in point 20 of Article R.211-6 after the service has been provided.

Particular Terms and Conditions of Sale - 2021/2022

1.- The rates of our cruises are per person and include the following:

- All meals while on board the ship (from dinner on the day of embarkation to breakfast on the day of disembarkation)
- Captain's welcome cocktail and gala dinner
- "Open Bar" (pouring wines, house champagne, alcohol except premium brands...list available upon request)
- Evening entertainment and events
- Room service 24h (special selection)
- Highly qualified bilingual French/English expedition team on all cruises
- Lectures presented by the expedition team
- Activities* during your cruise such as: participative science, snowshoeing, hovercraft outings, kayak outings and air balloon ride. During Arctic cruises, ice-fishing, snowmobile outings and dogsleding trips are also included.
- Park entry fees into protected areas
- Free unlimited WIFI onboard

*activities are subject to availability and weather conditions

1-1 Our "Hotel, flights", cruise and transfers" programme rates are per person and also include:

Cruise packages Longyearbyen-Reykjavik:

- outbound flight Paris to Longyearbyen

Cruise package Reykjavik-Longyearbyen:

- one-way return flight to Paris

Cruise package Reykjavik-Nome:

- one-way return flight Nome to Seattle

Ushuaia/Ushuaia cruises:

- 1-night stay in a 5*-star hotel in Santiago (Chile) (rooms available from late morning), dinner including beverage package, breakfast and transfer to the airport
- Flight Santiago / Ushuaia
- Transfer to the port in time for embarkation
- On disembarkation day, transfer to the airport, flight Ushuaia/Santiago

Puerto Montt/Ushuaia cruise:

- 1-night stay in a 5*-star hotel in Santiago (Chile) (rooms available from late morning), dinner including beverage package, breakfast and transfer to the airport
- Flight Santiago / Puerto Montt
- Transfer to the port in time for embarkation
- On disembarkation day, transfer to the airport, flight Ushuaia/Santiago

Ushuaia/Montevidéo cruise:

- 1-night stay in a 5*-star hotel in Santiago (Chile) (rooms available from late morning), dinner including beverage package, breakfast and transfer to the airport
- Flight Santiago / Ushuaia
- Transfer to the port in time for embarkation

In case of the Traveller's opposition, prior to the Signing of the Contract, to the Hotel, flights & transfers Service included in the Fixed-rate Package, a penalty fee of 30% of the Service amount excluding taxes will be charged to the Traveller.

Complimentary: boot rental (except for guarantee deposit)

Complimentary: polar parka for you to keep

* All flights indicated and included in the cruise package are in economy class.

2- Our cruise rates do not include:

- Any ground services before and/or after the cruise other than the ones mentioned in each "Hotel, flights, cruise and transfers" package and for which details are available upon request. Don't hesitate to contact your travel agent or consult www.ponant.com
- The optional pre and post cruise programmes, overlands and excursions presented in this brochure and on www.ponant.com
- Visa expenses (which may include additional administrative charges imposed by the authorities of a country) and/or immigration reciprocity taxes if applicable.
- Gratuities to onboard crew, local guides and drivers
- Luggage handling
- Optional Spa package to be booked prior your departure
- Polar diving
- Beverages other than the ones mentioned
- Laundry services, hair salon and à la carte Spa treatments
- Personal expenses, on board medical consultations and drug prescriptions
- Cancellation/luggage/assistance/repatriation/medical insurance(s)

3-Ground services

Ground services in the port of departure, transfers to the ship, including, as applicable, hotel room and restaurant bookings or guided tours, are performed by independent suppliers who are not employees of Compagnie du Ponant. In this respect, Compagnie du Ponant acts only as an agent and shall not be held liable for said services or for the acts or omissions of sub-contractors or other contractors. The passenger agrees that Compagnie du Ponant acts as agent and/or trustee for any person including ground and maritime agents and subcontractors, who provide any service forming, or in connection with, any part of the cruise.

Our Cruise and Flights package programmes are made in connection with Compagnie du Ponant selected regular or private charter flights. Final timings and schedule of the day by day programme will be communicated with the cruise ticket. All our programmes are based on economy class air and according to number of seats available. If the class is not available anymore, we will suggest, depending on the availability, extra seats with a supplement.

On International flights, check-in luggage is limited to 23kg/50lbs and 8kg/11 to 17lbs per person for carry-on luggage (besides airlines frequent flyer advantages). On regular domestic or intercontinental flights, check-in luggage limits are between 15 and 20 kg/33 to 44lbs and 5 to 8kg/17lbs per person for carry-on. On Compagnie du Ponant Private charter flights, check-in luggage is limited to 23 kg/50lbs and 5kg/11lbs maximum per person as carry-on. We thank you for taking these restrictions into account. Airline carriers charge for extra weight and sometimes refuse, for strict security reasons, to check-in overweight and oversized luggage. Compagnie du Ponant and the airline carriers waive all liability for luggage with extra weight that is refused at the check-in.

3.1 Services included in "Cruise, flights and Transfers packages:

Packages "Cruise, Flights and Transfers" include ground services before and/or after the cruise as described in documents available 15 months prior departure of each cruise and available on www.ponant.com. However, the complete details will only be made available once the flight times have been confirmed (approximately 3 months prior to departure).

3.2 Ground activities included during expedition cruises itself:

By choosing an expedition cruise, passengers agree to follow the rules of good conduct presented by the expedition team during the cruise. We remind you that being properly equipped is essential (clothing, sunglasses, etc.) and we recommend bringing binoculars to enable you to observe the wildlife comfortably and respectfully during your excursions and shore visits.

3.3 Pre and post-cruise programmes and pre bookable tours

Pre and Post-cruise programmes (as detailed on www.ponant.com), pre bookable tours and shore excursions are performed by independent suppliers who are not employees of Compagnie du Ponant. In this respect, Compagnie du Ponant acts only as an agent and shall not be held liable for said services or for the acts or omissions of sub-contractors or other contractors. The passenger agrees that Compagnie du Ponant acts as agent and/or trustee for any person including ground and maritime agents and subcontractors, who provide any service forming, or in connection with, any part of the cruise.

Hotel accommodations are based on 4 and 5-star rated hotels. Official check-in time is 4pm, check-out time is 11am unless early check-in or late check-out supplement are paid.

Travellers are advised to check all the information with the authorities concerned prior to the departure date. CDP advises Travellers to consult the country factsheets relating to the chosen destinations. CDP specifically draws Travellers' attention to the fact that the information provided may change up until the departure date, and they are advised to consult that information up until the time of departure. CDP invites Travellers to adjust their behavior to the visited country, to exercise vigilance and to avoid carrying valuable objects during their travel.



INFORMATION & RESERVATIONS

Europe, Middle East & Africa: 0808 23 43 802 / bookings@ponant.com

Belgium: +32 (0)2 647 37 05 | Switzerland: 0800 552 741

Rest of the world: +33 4 91 16 16 27

reservation@ponant.com

Asian countries: reservations.apac@ponant.com



www.ponant.com